

Cast Resin & Dry Transformers

Since 1979

Introduction to **KOC**

Specialist in Design and Manufacture of **Transformer**
Customer and Quality are the KOC's first priority.



 **KOC ELECTRIC CO., LTD.**



KOC INDEX

Company Information	1
Sales Markets	4
3D Figure of KOC Electric Power Schema	6
Main Products	8
Design Features	10
Quality Assurance & Testing	17
Supply Record / Totally	21
Reference List for M.V CAST RESIN TRANSFORMERS	22
Reference List for M.V DRY TRANSFORMERS	41

Company Information

- ❖ Established Company Since 1979
- ❖ Fully Paid Capital of 9600 Thousand Dollars(US \$)
- ❖ 230 Employees (Head Office & Ulsan Factory)



KOC ELECTRIC CO., LTD.
www.kocelec.com



❖ HEAD OFFICE (BUSAN)

#1495-4, Songjung-Dong, Gangseo-Gu,
Busan, Korea

TEL. 82-51-832-0550

FAX. 82-51-832-0660

E-MAIL. koc@kocelec.com



❖ ULSAN FACTORY (OIL TRANSFORMER)

#852-162, Gacheon-ri, Samnam-myeon,
Ulju-gun, Ulsan, Korea

TEL. 82-52-255-7700

FAX. 82-52-255-7799

E-MAIL. pkoc@kocelec.com

Company



HEAD OFFICE

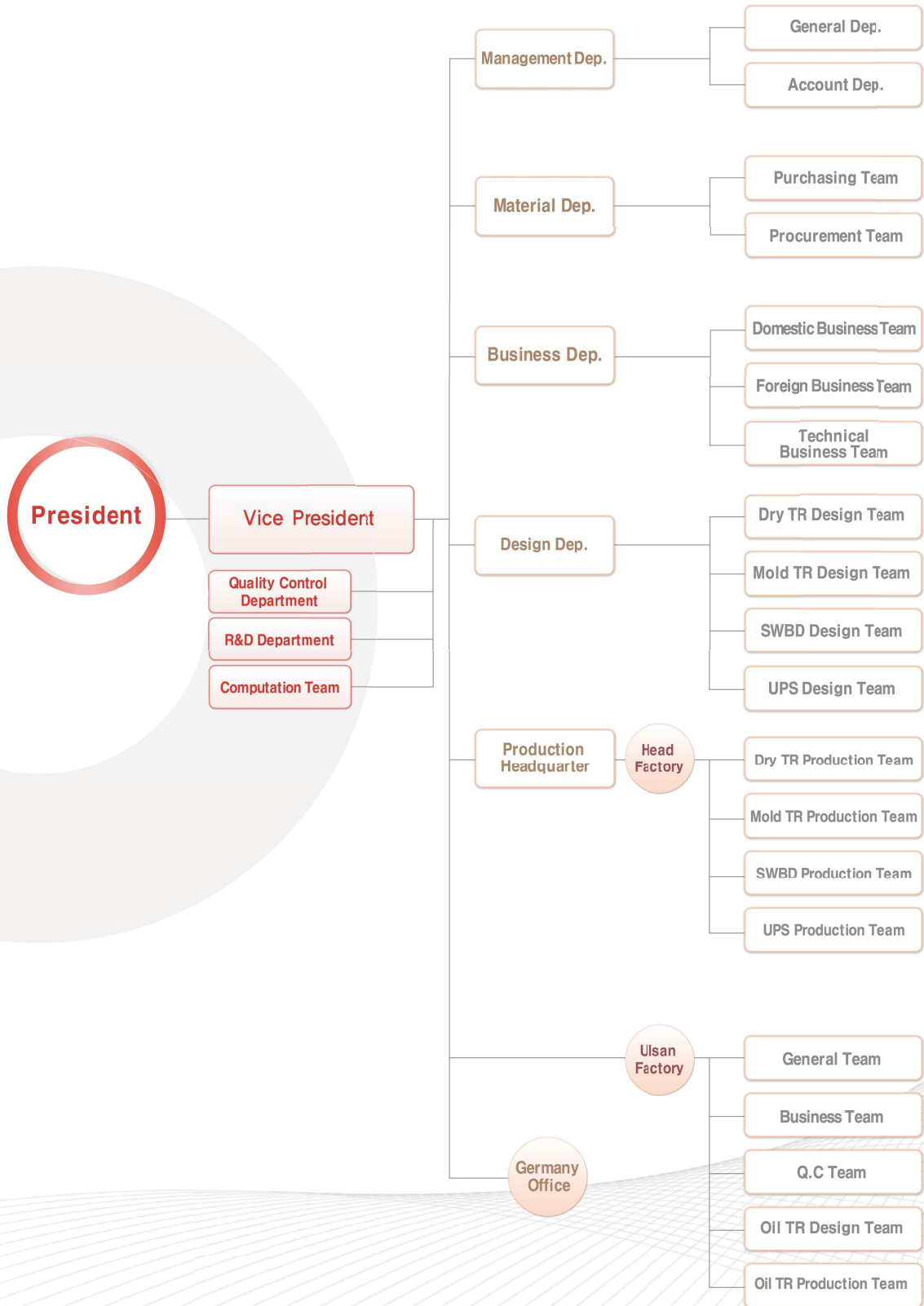


A PLANT

B PLANT



Organization

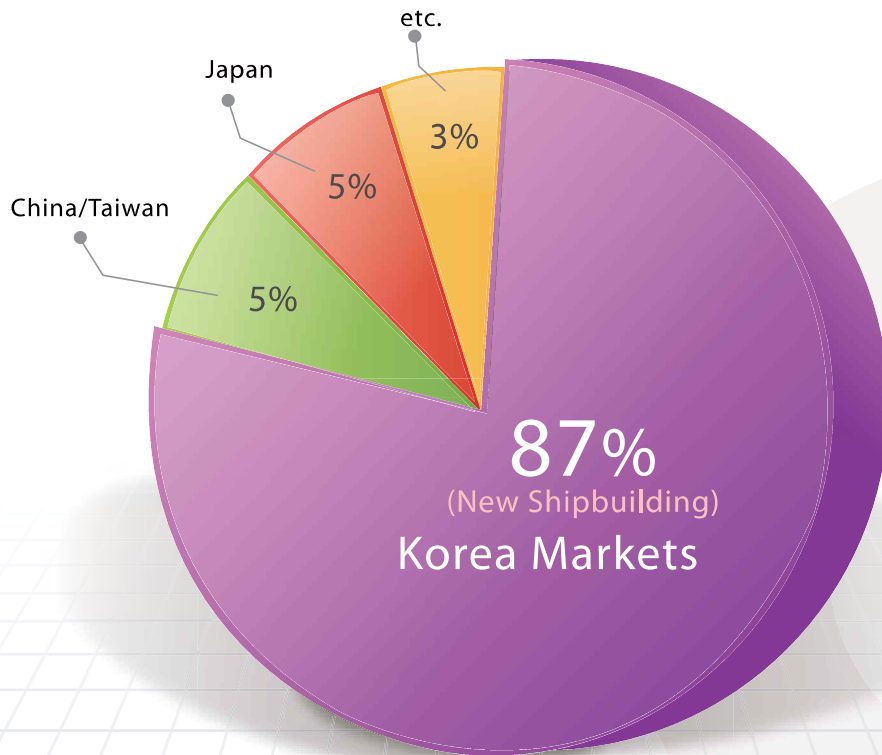


Customer and Quality are the KOC's first priority



Sales Markets

Annual Production Capacity of 90 Million Dollars (US \$)



Cast Resin & Dry TR

❖ KOREA : 87%

❖ JAPAN: 5%

❖ CHINA / TAIWAN : 5%

❖ etc. : 3%

Credible & Reliable Partners

❖ Korean

DAEWOO (DSME)	HYUNDAI (HHI)	SAMSUNG (SHI)
STX	HHI / SAMHO	HHI / MIPO
HANJIN	SPP	Sung Dong

❖ Export

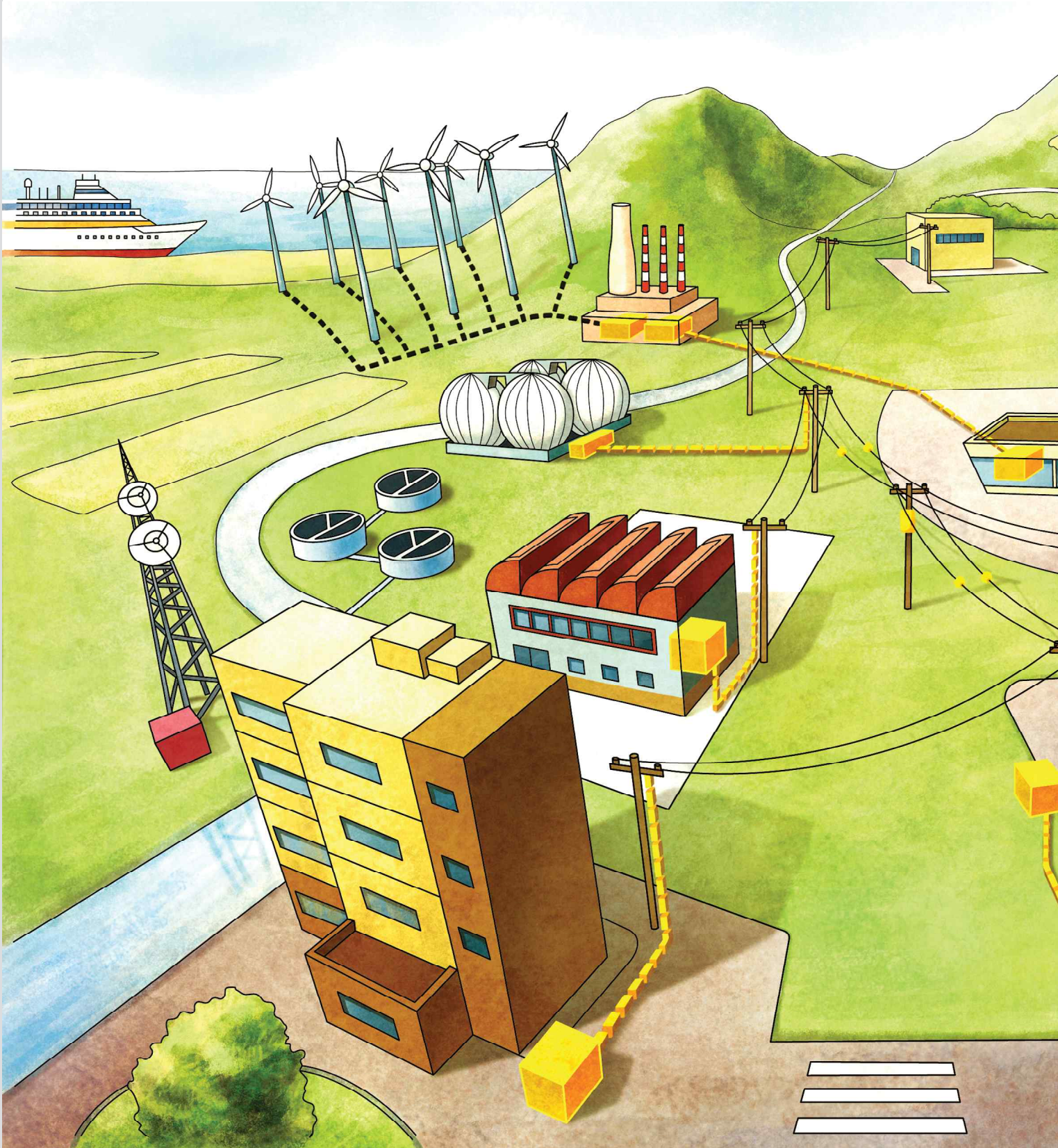
CSBC (TAIWAN)	MITSUBISHI (JAPAN)	SIEMENS (GERMANY, SINGAPORE)
CONVERTEAM (UK)	NCS (CHINA)	IHI MU (JAPAN)



Customer and Quality are the KOC's first priority



3D Figure of KOC Electric Power Schema



Specialist in Design and Manufacture of Transformer



Applications



Main Products



Cast Resin Type TR



Dry Type TR



Oil Immersed TR



VPI Type TR

Customer and Quality are the KOC's first priority



Main Products

Transformers

- Cast resin Type Transformer
(UP TO 36kV , 10MVA)
- Dry Type Transformer
(UP TO 13.2kV , 10MVA)
- VPI Type Transformer
(UP TO 24kV, 10MVA)
- Oil Immersed Transformer
(Up To 80MVA)



Oil Transformer



Load Bank TR



Cast Resin TR



Cast Resin with Cubicle



VPI Disk TR

Product Ranges

Rich experiences, continuous research and development technology, and unique CAST RESIN, DRY TYPE TRANSFORMERS.

The KOC has manufactured and supplied numerous CAST RESIN, DRY TR. It also has been supplied for marine use, offshore and industries to be recognized for its quality.

Applications

- Marine & Offshore
- Power Plants and Oil Platforms
- Underground Rail Road
- High-Rise Building
- Traction
- Nuclear Power Plant, Hydroelectric Power Plant
- Win Turbine (Force)

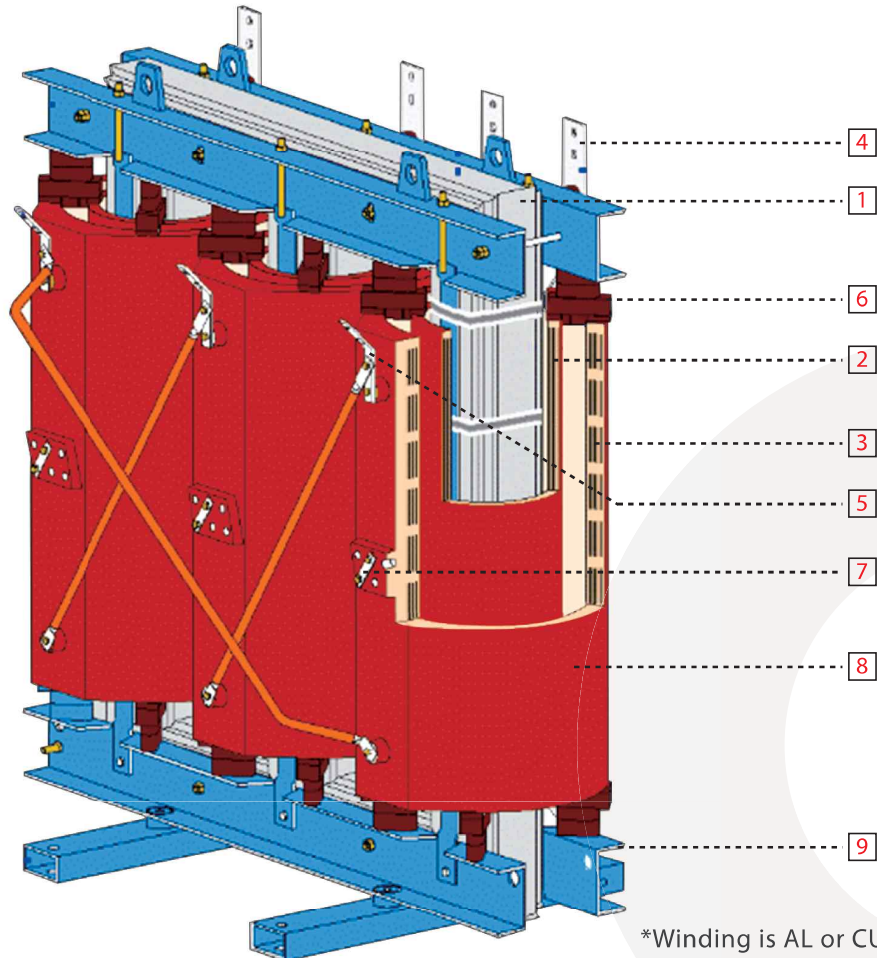
Product Ranges

- Capacity Ranges : Up to 10MVA
- Rated Voltages : Up to 36kV
- Ph. Freq. : 3PH, 50/60Hz
- Enclosure Protection : IP00 Up to IP44, IP54
- Cooling : AN, AF, WATER COOLING
- Insulation Class : B, F, H
- Winding Materials : AL. OPTION CU.
- Standards

IEC 60076, ANSI C57, NEMA ST-20
All International Standards



Design Features



1. **Core** made of grain-oriented, low-loss electro-laminations. With V-notch and step-lap constructions to improve the characteristics of the core, and to reduce the noise of Transformers.
2. **L/V winding** made of aluminum or copper sheet. Turns firmly glued together by means of insulating sheet wrapper material.
3. **H/V winding** consisting of vacuum-potted single foil-type aluminium or copper strip.
4. **L/V terminal** normal arrangement: Top, rear. Special version: Bottom, available on request.
5. **H/V terminal** variable arrangements, for optimal station design.
6. **Resilient spacers** to insulate core and windings from mechanical vibrations, resulting in low noise emissions.
7. **H/V tap changer**, variable adaptation of electric volts to supply networks.
8. **Insulation:** Mixture of epoxy resin and quartz powder. Makes the transformers maintenance-free, moisture-proof, tropicalized, flame-resistant and self-extinguishing.
9. **Clamping frame** can be easily constructed by anchor bolts.

Application & Experiences



- Over 50 Countries
- Over 60 Owners

Customer and Quality are the KOC's first priority



Major Manufacturing Equip.



Vacuum Resin Casting Plant
Maker : HÜBERS / Germany (2 Sets)



Dry Plant
Electrical Heater (14 Sets)



High Voltage Winding M/C
(7 Sets)



Low Voltage Winding M/C
Maker : TUBOLY, H.F. STOLLBERG (3 Sets)

Manufacturing Process

Cast Resin Transformer



L/V Winding



H/V Winding



Core Build



Casting Plant



Assembly



Dry Plant



Coil Insert of Core



Completion

Customer and Quality are the KOC's first priority



Perfect Technologies

Cast Resin Transformer



Coils

The coils are wound together insulating sheet from copper or aluminum strip according to its rating currents.

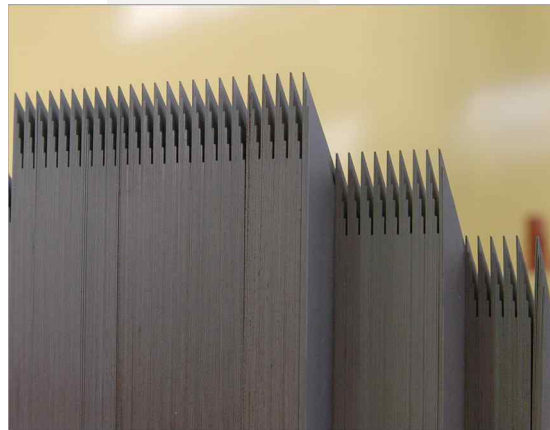
This considerable reduces the axial short circuit forces.

The conductor and insulating material are bonded together by heat treatment and form a compact unit which sealed mixed and can also safety withstand radial forces.

Core

The core is made exclusively of coil-rolled grain-oriented sheet coated with magnesium-silicate-phosphate insulation on both sides.

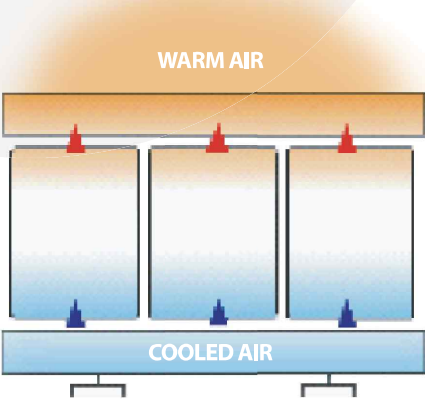
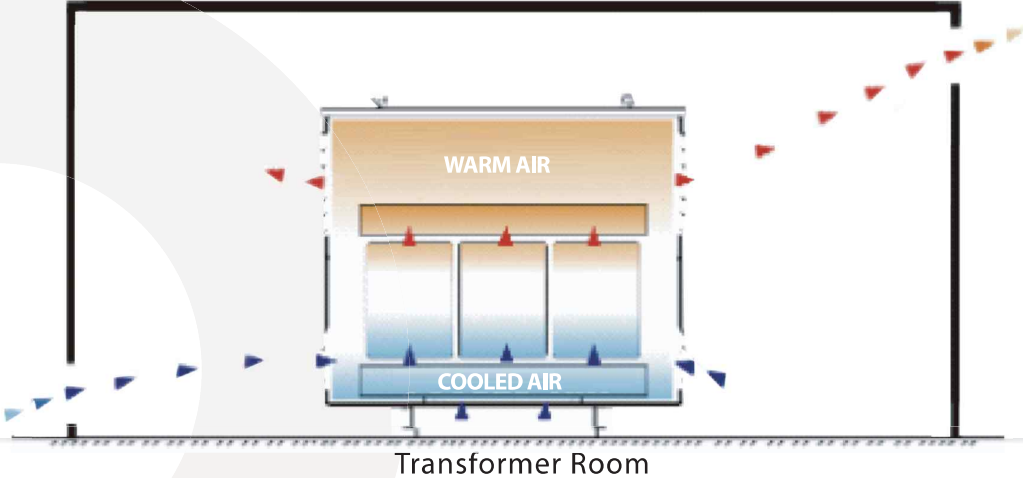
To fully utilize the grain orientation of the laminations, the ends of the limbs and yokes mitered and stacked together by overlapping the laminations in pairs, which will reduce the no-load losses and thus the power required for magnetizing the core.



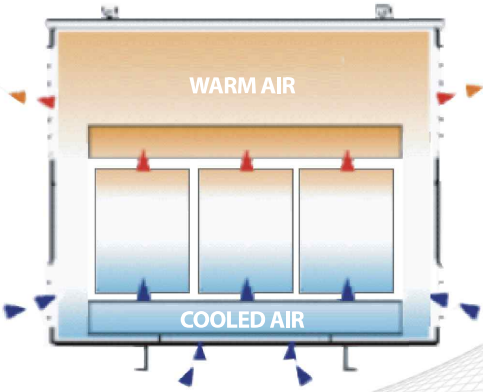
Starting - Ventilation

❖ Ventilation of the Transformer Room

Fundamentally, cast-resin transformers don't need additional measurements of ventilation. To support the natural convection(cooling), fresh air should flow in at the lower part of the frame or the installation place and should flow out at the opposite side above.



Only Transformer



Transformer with Enclosure

Customer and Quality are the KOC's first priority



Advantages of Cast Resin Transformers

These characteristics will be obtained by the combination of vacuum casting for all windings and by the reinforcement of glass fiber.

Cast Resin Transformers are produced according to the customer specifications and IEC STANDARDS as well as IEC 60076 and IEC 60726. They are also available according to other specifications, for example according to classification societies.

The KOC Cast Resin Transformer is superior due to the following essential characteristics

❖ Vacuum Casting for all winding systems

- The advantages for the entire transformers are only effective if all winding systems are insulated as vacuum cast resin windings.

❖ Basic impulse levels

- All around vacuum casted transformers are provided with impulse voltage levels in the same manner as liquid cooled transformers according to IEC 60076 Part III, ANSI C57, NEMA ST-20

❖ Moisture Insensitive

- The vacuum casting of all windings provides against infiltration of moisture and makes them practically immune to the influence of high air humidity or water. The danger of any damage caused by humidity can be excluded.

❖ No Maintenance

- As a result of our design the KOC transformer need almost no maintenance. The fact that transformers do not need to be serviced includes no necessity of tighten up or correction of the windings

❖ Temperature fluctuations resistance

- Even extreme temperature fluctuations won't have any influence on the transformer and its operation due to the exact choice and the harmony of the insulation materials.

❖ High Overload Capacity for Short Time

- The high warming time constant (T) of cast resin transformers allow, in connection with the insulation class F, for a short time a higher reserve capacity compared to liquid cooled transformers.

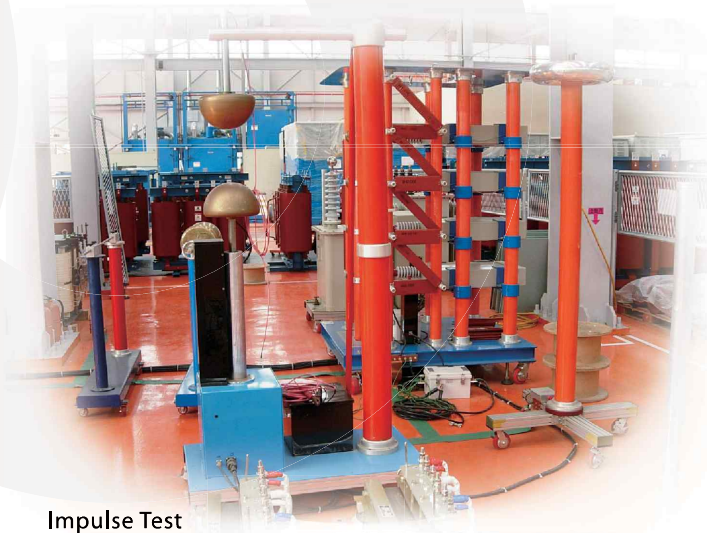
Quality Assurance & Testing

All transformers are manufactured according to the IEC publication 60076 standard. The transformers are individually tested according to IEC standards and several national standards e.g. NEMA, ANSI, JEC-214 & etc.

Under the slogan of 『Quality First』, we do our best in order to manufacture better product with whole of our KOC staff-members.

❖ Routine Tests

- Measurement of winding resistance
- Measurement of voltage ratio and testing of voltage vector relationship
- Measurement of impedance voltage, short-circuit impedance and load loss
- Measurement of on-load loss and current
- Dielectric tests:
 - Separate source voltage withstand test
 - Induced over voltage withstand test



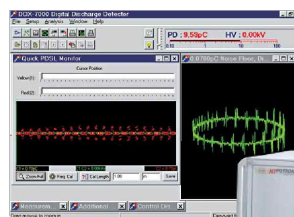
Impulse Test

❖ Type Tests

- Temperature rise test
- Lighting impulse test

❖ Special Tests

- PD test
- Short circuit test
- Measurement of sound level



Partial Discharges Measurement



These tests are carried out in accordance with the relative IEC 60076 STD.

Customer and Quality are the KOC's first priority



Quality Certification



CERTIFICATE OF APPROVAL

This is to certify that the Environmental Management System of:

**KOC Electric Co., Ltd.
Gangseo-gu, Busan
Korea**

has been approved by Lloyd's Register Quality Assurance to the following Environmental Management System Standard:

ISO 14001:2004

The Environmental Management System is applicable to:

Design and manufacture of dry type powder/mold transformers, oil type transformers, switchboards, controllers, battery chargers and public address system for marine and industrial uses.

Approval Certificate No: SEO 6003397 Original Approval: 29 February 2008
Current Certificate: 18 November 2009
Certificate Expiry: 17 November 2012

Sungbeom Yoo
Issued by: LRQA (Korea) Ltd. for and on behalf of
Lloyd's Register Quality Assurance Limited



This document is subject to the provision on the reverse
17th Floor, Singjong Bldg, #25-4, Yeosu-dong, Yeongdeungpo-gu, Seoul, 150-010, Korea
This approval is limited to the activities within the scope described in the certificate and does not extend to other activities not covered by the certificate. The use of the UKAS Accreditation Mark indicates Accreditation in respect of those activities covered by the Accreditation Certificate Number 001.



CERTIFICATE OF APPROVAL

This is to certify that the Quality Management System of:

**KOC Electric Co., Ltd.
Gangseo-gu, Busan & Ulju-gun, Ulsan
Korea**

has been approved by Lloyd's Register Quality Assurance to the following Quality Management System Standards:

ISO 9001:2008

The Quality Management System is applicable to:

Design and manufacture of dry type power/mold transformers, oil type transformers, switchboards, controllers, battery chargers and public address system for marine and industrial uses.

This certificate is valid only in association with the certificate schedule bearing the same number on which the locations applicable to this approval are listed.

Approval Certificate No: SEO 0981027 Original Approval: 13 August 1998
Current Certificate: 1 September 2010
Certificate Expiry: 31 August 2013

Sungbeom Yoo
Issued by: LRQA (Korea) Ltd. for and on behalf of
Lloyd's Register Quality Assurance Limited



This document is subject to the provision on the reverse
17th Floor, Singjong Bldg, #25-4, Yeosu-dong, Yeongdeungpo-gu, Seoul, 150-010, Korea
This approval is limited to the activities within the scope described in the certificate and does not extend to other activities not covered by the certificate. The use of the UKAS Accreditation Mark indicates Accreditation in respect of those activities covered by the Accreditation Certificate Number 001.

Type Approval Certificate Germanischer Lloyd

This is to certify that the undemoted product(s) has/have been tested in accordance with the relevant requirements of the GL Type Approval System.

Certificate No. 33 159 - 06 HH
Company KOC Electric Co., Ltd.
1495-4, Songjung-dong
Gangseo-gu, Busan, 619-270, KOREA (SOUTH)

Product Description Cast Resin Transformers
for distribution and ship supply applications in marine environments

Type TMO - xx - . . . x

Environmental Category H


Technical Data / Range of Application
Rated power: up to 5000 kVA
Rated voltage: up to 7200 V
Frequency: 50 Hz and 60 Hz
Degree of prot.: IP 00 up to IP 44
Ambient temp.: 45 °C to 50 °C
Temp. Class: B, F or H
Cooling: AN, natural cooling
Sea realisation

Test Standard GL-Regulations for the Performance of Type Tests, part 4, edition 1999
IEC 60726:1982+A1:1997

Documents Test reports: Inspection and test report Rev 1 dated 31.09.2005
Test procedure (Cast Resin M.V. Transf. / 05.04.06)
Drawings: Specification for Cast Resin Transformers Rev. 0, KD24093
Catalogue: "KOC Electric Co., Ltd."

Remarks None

Valid until 2011-06-23

Page 1 of 1 Type Approval Symbol 

File No. I.G.07
Hamburg, 2008-07-24

Wolfgang Voß *Horst-Dieter Hesse*
Germanischer Lloyd Wolfgang Voß Horst-Dieter Hesse

This certificate is issued on the basis of "Guidelines for the Performance of Type Approval Part 1, Procedure"

Recognition Certificate Germanischer Lloyd

This is to certify, that the undemoted manufacturer has been recognized in accordance with the relevant regulations of the GL Approval System.

Certificate No. GL-EP 26 539 - 05 HH
Manufacturer KOC Electric Co., Ltd.
1495-4, Songjung-dong
Gangseo-gu, Busan, 619-270, KOREA (SOUTH)

The manufacturer is authorized to carry out supervision and final inspections of the undemoted products on his own responsibility in accordance with the rules of Germanischer Lloyd and to issue Test Certificates as agreed with the Society.

Product Description Auto Transformers
Dry Type Transformers

Type of Products AT0 - xx - x and HAT0 - xx - x
TPO - xx - x and HTPO - xx - x / TMO - xx - . . . X

Designation of Products Auto Transformers Dry Type Transformers
Cast Resin Transformers

Rating: 100 kW up to 5000 kW up to 5000 kVA
Rated voltage: 220 V up to 7200 V up to 7200 V
Frequency: 50 and 60 Hz 50 and 60 Hz
Degree of prot.: IP 00 up to IP 44 IP 00 up to IP 44
Insulation class: D, F, H D, F, H
Cooling: AN, natural cooling AN, natural cooling
Sea realisation Sea realisation

Relevant Type Approval Certificates:
26 308 05 HH 26 746 05 HH (Dry Type)
33 159 06 HH (Cast Resin)

Approval Standard Regulations for the Inspection of Mechanical and Electrotechnical Products, edition April 1997

Documents Test reports: Inspection and test report Rev 3 dated 13.06.05
Tech. spec.: Type test procedure Auto transformer dated 11.06.05
Type test procedure Dry Type Transformer KD24093-1
List of persons in charge dated 20.06.2005

Valid until 2008-09-12

Page 1 of 1
File No. XVI.G.01
Hamburg, 2008-07-18

Wolfgang Voß *Horst-Dieter Hesse*
Germanischer Lloyd Wolfgang Voß Horst-Dieter Hesse

Quality Certification



Quality Certificate



DAEWOO SHIPBUILDING & MARINE ENGINEERING CO.,LT.
certifies that the company and items below have been assessed and found to comply with the requirements of Quality Certificate of DSME.

Company Name : KOC ELECTRIC CO.,LTD.
Address : #1495-4, Songjeong-dong, Kangseo-gu, Busan-City, Korea

Items : TRANSFORMER

Certificate No. : DSME-QM-11-0132
Valid Date : Feb. 28th, 2012

Sang-Tae Nam
President & CEO
Daewoo Shipbuilding & Marine Engineering Co., LTD.



CERTIFICATE NO. : SQ-2003-G01
 REISSUE DATE : Mar 1, 2009
 VALID DATE : until Feb 29, 2012



J. W. Kim
 VICE CHAIRMAN & CEO
 SAMSUNG HEAVY INDUSTRIES CO., LTD.



Warranty & Global Network

Certify of **KOC** products are to be free from defects in material and workmanship under normal use and service for a period of twelve(12) months from date of delivery from KOC, what happens first.

In the event of a failure covered by warranty, **KOC** will undertake to repair or replace the equipment that it is defective and it is returned with all transportation charges prepaid to the KOC. Repairs or replacement under warranty will be made without charge.

ARKNOAH SHIP MANAGEMENT

ARKNOAH German

KERUI China

KOC Korea
HEAD OFFICE

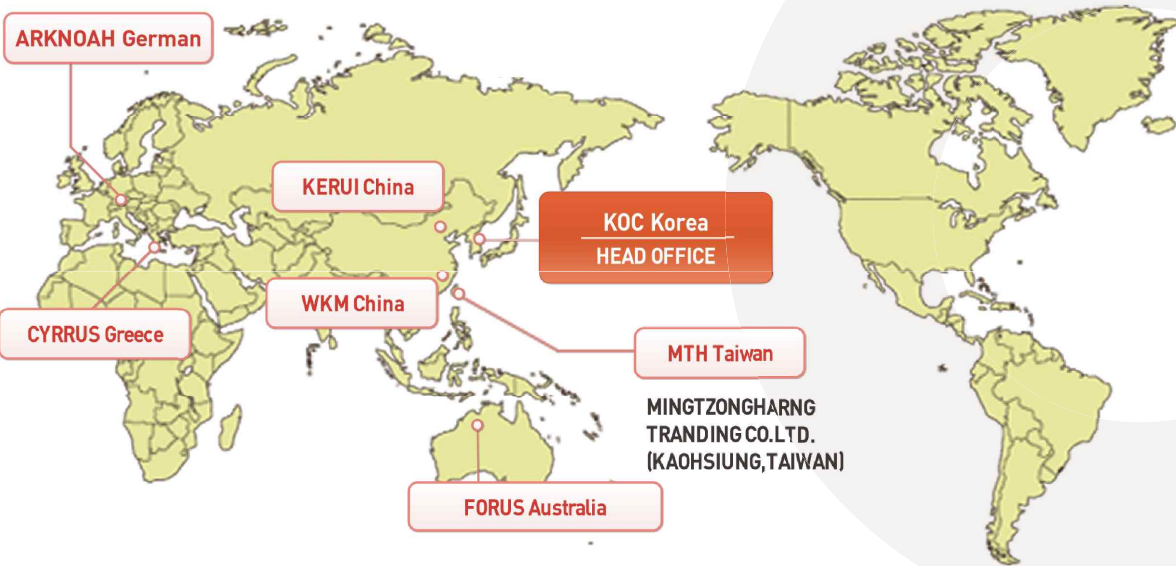
WKM China

MTH Taiwan

MINGZONGHARNG
TRANDING CO.LTD.
(KAOHSIUNG, TAIWAN)

CYRRUS Greece

FORUS Australia



Supply Record / Totally

L/V & M/V Transformers

YEAR	CAPACITY	Q'ty	SHIP TYPE
~ 2005	BELOW 120kVA	5699	<ul style="list-style-type: none"> · LNG CARRIER · CONTAINER VESSEL · F.P.S.O · CAR CARRIER · PASSENGER VESSEL · VLCC · CHEMICAL TANK · OIL TANK / BULK CARRIER · DRILL RIG · DRILL SHIP · WIND TURBINE (FORCE)
	~ 500kVA	936	
	~ 2000kVA	202	
	~ 5000kVA	357	
2006 ~ 2008	BELOW 120kVA	10846	
	~ 500kVA	2077	
	~ 2000kVA	2168	
	~ 5000kVA	567	
2009 ~ 2011. July	BELOW 120kVA	7490	
	~ 500kVA	2003	
	~ 2000kVA	2934	
	~ 6000kVA	390	
TOTAL (L/V & M/V TR)		35669 Sets	

Customer and Quality are the KOC's first priority



Reference List for M.V CAST RESIN TRANSFORMERS

Specialist in Design and Manufacture of Transformer



Reference List for M.V CAST RESIN TR (Above 6.6kV)

Update : 2011.July

Customer	Ship Owner	Kind of Vessel	Hull No.	Capacity	Voltage	Qty	Delivery
DSME	DSME	ROYAL DOCK #3	G002	1500KVA	11,000/450V	1	2005
DSME	DSME	ROYAL DOCK #3	G002	2500KVA	11,000/450V	2	2005
DSME	MSC	8,400 TEU CONTAINER SHIP	H4107	4000KVA	6600/450V	2	2005
DSME	MSC	8,400 TEU CONTAINER SHIP	H4107	630KVA	6600/450V	12	2005
DSME	MSC	8,400 TEU CONTAINER SHIP	H4108	4000KVA	6600/450V	2	2005
DSME	MSC	8,400 TEU CONTAINER SHIP	H4108	630KVA	6600/450V	12	2005
DSME	MISC	7,900 TEU CONTAINER SHIP	H4111	630KVA	6600/450V	12	2005
DSME	MISC	7,900 TEU CONTAINER SHIP	H4111	4000KVA	6600/450V	2	2005
HHI/SAMHO	HSHI	LOAD BANK	LOAD BANK	4500KVA	6600-3300/440V	2	2005
SHI	SHI	LOAD BANK	LOAD BANK	4500KVA	13,800/440V	2	2005
SPP SHIPBUILDING	SPP	L/C 12,000TON FLOATING DOCK	D1000	1500KVA	6600/450V	2	2005
SPP SHIPBUILDING	SPP	L/C 12,000TON FLOATING DOCK	D1000	500KVA	6600/225V	1	2005
DSME	MSC	8,400 TEU CONTAINER SHIP	H4109	4000KVA	6600/450V	2	2006
DSME	MSC	8,400 TEU CONTAINER SHIP	H4109	630KVA	6600/450V	12	2006
DSME	MSC	8,400 TEU CONTAINER SHIP	H4110	4000KVA	6600/450V	2	2006
DSME	MSC	8,400 TEU CONTAINER SHIP	H4110	630KVA	6600/450V	12	2006
DSME	MISC	7,900 TEU CONTAINER SHIP	H4112	4000KVA	6600/450V	2	2006
DSME	MISC	7,900 TEU CONTAINER SHIP	H4112	630KVA	6600/450V	12	2006
DSME	C.P.OFFEN	8,400 TEU CONTAINER	H4115	4000KVA	6600/450V	2	2006
DSME	C.P.OFFEN	8,400 TEU CONTAINER	H4115	630KVA	6600/450V	12	2006
DSME	C.P.OFFEN	8,400 TEU CONTAINER	H4116	4000KVA	6600/450V	2	2006
DSME	C.P.OFFEN	8,400 TEU CONTAINER	H4116	630KVA	6600/450V	12	2006
SAMHO/HHI	HSHI	SAMHO/LOAD BANK	LOAD BANK	4500KVA	6600-3300/440V	3	2006
DSME	SOVCOMFLOT	145,700 CBM LNG CARRIER	H2241	2900KVA	6600/450V	2	2007
DSME	SOVCOMFLOT	145,700 CBM LNG CARRIER	H2241	700KVA	6600/450V	2	2007
DSME	KOGAS	145,700CBM ICE CLASS LNG	H2260	1000KVA	6600/450V	2	2007
DSME	KOGAS	145,700CBM ICE CLASS LNG	H2260	3000KVA	6600/450V	2	2007
DSME	KOGAS	145,700CBM ICE CLASS LNG	H2261	1000KVA	6600/450V	2	2007
DSME	KOGAS	145,700CBM ICE CLASS LNG	H2261	3000KVA	6600/450V	2	2007
HANJIN	KOGAS(STX POS)	153,000M3 LNG CARRIER	N192	3300KVA	6600/450V	2	2007
HANJIN	KOGAS(STX POS)	153,000M3 LNG CARRIER	N192	850KVA	6600/450V	2	2007
HHI	HHI	HSHI/LOAD BANK	LOAD BANK	4500KVA	6660-3330/440V	2	2007
PILS CO., LTD.	-	70,000DWT FLOATING DOCK EXTENSION	FLOATING DOCK	1000KVA	6600/225V	2	2007
PILS CO., LTD.	-	70,000DWT FLOATING DOCK EXTENSION	FLOATING DOCK	2000KVA	6600/450V	2	2007
SHI	SHI	LOAD BANK	LOAD BANK	4500KVA	13,800/440V	3	2007
STX SHIPBUILDING	STX	72K FLOATING DOCK	FLOATING DOCK	1000KVA	6600/225V	2	2007

M.V CAST RESIN FR

Customer	ShipOwner	Kind of Vessel	Hull No.	Capacity	Voltage	Qty	Delivery
STX SHIPBUILDING	STX	72K FLOATING DOCK	FLOATING DOCK	2000KVA	6600/450V	2	2007
STX SHIPBUILDING	STX	72K FLOATING DOCK	FLOATING DOCK	3000KVA	6600/450V	2	2007
CSBC	PETER DOEHLE	6,600TEU CONTAINER VESSEL	H895	2000KVA	6600/450V	4	2008
CSBC	PETER DOEHLE	6,600TEU CONTAINER VESSEL	H895	3500KVA	6600/450V	2	2008
CSBC	PETER DOEHLE	6,600TEU CONTAINER VESSEL	H895	650KVA	6600/450V	12	2008
CSBC	PETER DOEHLE	6,600TEU CONTAINER VESSEL	H896	2000KVA	6600/450V	4	2008
CSBC	PETER DOEHLE	6,600TEU CONTAINER VESSEL	H896	3500KVA	6600/450V	2	2008
CSBC	PETER DOEHLE	6,600TEU CONTAINER VESSEL	H896	650KVA	6600/450V	12	2008
DSME	-	EXTRA LARGE FLOATING DOCK	G008	2500KVA	11,000/450V	4	2008
DSME	-	EXTRA LARGE FLOATING DOCK	G008	1000KVA	11,000/230V	2	2008
DSME	SOVCOMFLOT	145,700 CBM LNG CARRIER	H2242	2900KVA	6600/450V	2	2008
DSME	SOVCOMFLOT	145,700 CBM LNG CARRIER	H2242	700KVA	6600/450V	2	2008
DSME	BW GAS	162,400 LNG CARRIER	H2258	1000KVA	6600/450V	2	2008
DSME	BW GAS	162,400 LNG CARRIER	H2258	3500KVA	6600/450V	2	2008
DSME	BW GAS	162,400 LNG CARRIER	H2259	1000KVA	6600/450V	2	2008
DSME	BW GAS	162,400 LNG CARRIER	H2259	3500KVA	6600/450V	2	2008
DSME	TMT	173,400 CBM LNG CARRIER	H2268	1000KVA	6600/450V	2	2008
DSME	TMT	173,400 CBM LNG CARRIER	H2268	3500KVA	6600/450V	2	2008
DSME	CONTI	11,000 TEU CONTAINERSHIP	H4125	630KVA	6600/450V	12	2008
DSME	CONTI	11,000 TEU CONTAINERSHIP	H4125	4000KVA	6600/450V	2	2008
DSME	CMA-CGM	11,000 TEU CONTAINERSHIP	H4126	4000KVA	6600/450V	2	2008
DSME	CMA-CGM	11,000 TEU CONTAINERSHIP	H4126	630KVA	6600/450V	12	2008
DSME	CMA-CGM	11,000 TEU CONTAINERSHIP	H4127	4000KVA	6600/450V	2	2008
DSME	CMA-CGM	11,000 TEU CONTAINERSHIP	H4127	630KVA	6600/450V	12	2008
DSME	CMA-CGM	11,000 TEU CONTAINERSHIP	H4128	4000KVA	6600/450V	2	2008
DSME	CMA-CGM	11,000 TEU CONTAINERSHIP	H4128	630KVA	6600/450V	12	2008
DSME	MSC	13,230 TEU CONTAINERSHIP	H4135	750KVA	6600/450V	14	2008
DSME	MSC	13,230 TEU CONTAINERSHIP	H4135	4000KVA	6600/450V	2	2008
DSME	MSC	13,230 TEU CONTAINERSHIP	H4136	4000KVA	6600/450V	2	2008
DSME	MSC	13,230 TEU CONTAINERSHIP	H4136	750KVA	6600/450V	14	2008
DSME	NRS	4,600 TEU CONTAINERSHIP	H4140	4000KVA	450/6600V	1	2008
DSME	CMA-CGM	13,300 TEU CONTAINERSHIP	H4156	4000KVA	6600/450V	2	2008
DSME	CMA-CGM	13,300 TEU CONTAINERSHIP	H4156	750KVA	6600/450V	12	2008
DSME	NRS	8400TEU CONTAINER SHIP	H4174	4000KVA	6600/450V	2	2008
DSME	NRS	8400TEU CONTAINER SHIP	H4174	630KVA	6600/450V	12	2008
HANJIN	HANJIN	LOAD BANK	SC07013	6000KVA	6660-3300/450V	1	2008
HANJIN	STX PAN OCEAN	153,000M3 LNG CARRIER	N193	1500KVA	6600/450V	2	2008
HANJIN	STX PAN OCEAN	153,000M3 LNG CARRIER	N193	2500KVA	6600/450V	2	2008
HHI	-	-	H1839	1700KVA	6600/440V	2	2008

M.V EAST RESIN IR

Customer	ShipOwner	Kind of Vessel	Hull No.	Capacity	Voltage	Qty	Delivery
HHI	-	-	H1839	1700KVA	6600/440V	2	2008
HHI	-	-	H1842	1800KVA	6600/440V	4	2008
HHI	-	-	H1842	1800KVA	6600/440V	2	2008
HHI	HMM	8,600 TEU CONTAINER CARRIER	H1940	1800KVA	6600/440V	4	2008
HHI	HMM	8,600 TEU CONTAINER CARRIER	H1940	1800KVA	6600/440V	2	2008
HHI	HMM	8,600 TEU CONTAINER CARRIER	H1940	3900KVA	6600/440V	2	2008
HHI	HMM	8,600 TEU CONTAINER CARRIER	H1941	1800KVA	6600/440V	4	2008
HHI	HMM	8,600 TEU CONTAINER CARRIER	H1941	1800KVA	6600/440V	2	2008
HHI	HMM	8,600 TEU CONTAINER CARRIER	H1941	3900KVA	6600/440V	2	2008
HHI	BRAVO	11,300 TEU CONTAINER CARRIER	H1942	2500KVA	6600/450V	1	2008
HHI	BRAVO	11,300 TEU CONTAINER CARRIER	H1942	4400KVA	6600/450V	2	2008
HHI	BRAVO	11,300 TEU CONTAINER CARRIER	H1942	2000KVA	6600/450V	4	2008
HHI	BRAVO	11,300 TEU CONTAINER CARRIER	H1942	2000KVA	6600/450V	2	2008
HHI	BRAVO	11,300 TEU CONTAINER CARRIER	H1943	2000KVA	6600/450V	2	2008
HHI	BRAVO	11,300 TEU CONTAINER CARRIER	H1943	2000KVA	6600/450V	4	2008
HHI	BRAVO	11,300 TEU CONTAINER CARRIER	H1943	2500KVA	6600/450V	1	2008
HHI	BRAVO	11,300 TEU CONTAINER CARRIER	H1943	4400KVA	6600/450V	2	2008
HHI	-	11,400 TEU CLASS CONTAINER CARRIER	H1954	1900KVA	6600/450V	2	2008
HHI	-	11,400 TEU CLASS CONTAINER CARRIER	H1954	1900KVA	6600/450V	2	2008
HHI	-	11,400 TEU CLASS CONTAINER CARRIER	H1954	2200KVA	6600/450V	2	2008
HHI	-	11,400 TEU CLASS CONTAINER CARRIER	H1956	1900KVA	6600/450V	2	2008
HHI	-	11,400 TEU CLASS CONTAINER CARRIER	H1956	1900KVA	6600/450V	2	2008
HHI	-	11,400 TEU CLASS CONTAINER CARRIER	H1956	2200KVA	6600/450V	2	2008
HHI	-	11,400 TEU CLASS CONTAINER CARRIER	H1957	1900KVA	6600/450V	2	2008
HHI	-	11,400 TEU CLASS CONTAINER CARRIER	H1957	1900KVA	6600/450V	2	2008
HHI	-	11,400 TEU CLASS CONTAINER CARRIER	H1957	2200KVA	6600/450V	2	2008
HHI	-	SAMHO/HHI	S331	2750KVA	440/3300V	1	2008
HHI	-	SAMHO/HHI	S332	2750KVA	440/3300V	1	2008
HHI	HMM	-	S341	1800KVA	6600/440V	4	2008
HHI	HMM	-	S341	3900KVA	6600/440V	2	2008
HHI	HMM	-	S341	1800KVA	6600/440V	2	2008
HHI	HMM	-	S342	1800KVA	6600/440V	2	2008
HHI	HMM	-	S342	3900KVA	6600/440V	2	2008
HHI	HMM	-	S342	1800KVA	6600/440V	4	2008
HHI	BRAVO	11,300 TEU CONTAINER CARRIER	S343	2000KVA	6600/450V	4	2008
HHI	BRAVO	11,300 TEU CONTAINER CARRIER	S343	4400KVA	6600/450V	2	2008
HHI	BRAVO	11,300 TEU CONTAINER CARRIER	S343	2000KVA	6600/450V	2	2008
HHI	BRAVO	11,300 TEU CONTAINER CARRIER	S343	2500KVA	6600/450V	1	2008
HHI	BRAVO	11,300 TEU CONTAINER CARRIER	S344	2000KVA	6600/450V	4	2008

M.V EAST RESIN FR

Customer	Ship Owner	Kind of Vessel	Hull No.	Capacity	Voltage	Qty	Delivery
HHI	BRAVO	11,300 TEU CONTAINER CARRIER	S344	4400KVA	6600/450V	2	2008
HHI	BRAVO	11,300 TEU CONTAINER CARRIER	S344	2000KVA	6600/450V	2	2008
HHI	BRAVO	11,300 TEU CONTAINER CARRIER	S344	2500KVA	6600/450V	1	2008
ORIENT SHIPBUILDING	-	FLOATING DOCK 230M	OSF0002	2500KVA	6600/450V	1	2008
PILS CO., LTD.	SHI	30K TLC LOADOUT DEVICE	FLOATING DOCK	3500KVA	10,000/390V	1	2008
PILS CO., LTD.	C&HEAVY IND.	20,000TLC F/DOCK, COSCO DALIAN SY	N147	1000KVA	6600/225V	2	2008
PILS CO., LTD.	C&HEAVY IND.	20,000TLC F/DOCK, COSCO DALIAN SY	N147	2000KVA	6600/450V	2	2008
PILS CO., LTD.	C&HEAVY IND.	20,000TLC F/DOCK, COSCO DALIAN SY	N147	2000KVA	6600/450V	2	2008
PILS CO., LTD.	-	120K DWT F/DOCK(G3)/COSCO DALIAN SY	SP68051	1500KVA	6600/225V	4	2008
PILS CO., LTD.	-	120K DWT F/DOCK(G3)/COSCO DALIAN SY	SP68051	2000KVA	6600/450V	4	2008
PILS CO., LTD.	-	120K DWT F/DOCK(G3)/COSCO DALIAN SY	SP68051	2000KVA	6600/450V	2	2008
PILS CO., LTD.	-	120K DWT F/DOCK(G3)/COSCO DALIAN SY	SP68051	3000KVA	6600/450V	2	2008
SAMJIN	SAMJIN	15K TLC SKID BARGE	H8001	2500KVA	10,000/390V	1	2008
SHI	LEIF HOEGH	145,800 m3 LNG Shuttle & Re-gasification Vessel	H1688	1800KVA	6600/450V	2	2008
SHI	LEIF HOEGH	145,800 m3 LNG Shuttle & Re-gasification Vessel	H1688	3400KVA	6600/450V	2	2008
SHI	LEIF HOEGH	145,800 m3 LNG Shuttle & Re-gasification Vessel	H1688	900KVA	6600/450V	2	2008
SHI	MSC	10000TEU CONTAINER VESSEL	H1708	1500KVA	6600/450V	1	2008
SHI	MSC	10000TEU CONTAINER VESSEL	H1708	1900KVA	6600/450V	1	2008
SHI	MSC	10000TEU CONTAINER VESSEL	H1708	2100KVA	6600/450V	3	2008
SHI	MSC	10000TEU CONTAINER VESSEL	H1708	4200KVA	6600/450V	2	2008
SHI	MSC	10000TEU CONTAINER VESSEL	H1709	1500KVA	6600/450V	1	2008
SHI	MSC	10000TEU CONTAINER VESSEL	H1709	1900KVA	6600/450V	1	2008
SHI	MSC	10000TEU CONTAINER VESSEL	H1709	2100KVA	6600/450V	3	2008
SHI	MSC	10000TEU CONTAINER VESSEL	H1709	4200KVA	6600/450V	2	2008
SHI	MSC	10000TEU CONTAINER VESSEL	H1710	1500KVA	6600/450V	1	2008
SHI	MSC	10000TEU CONTAINER VESSEL	H1710	1900KVA	6600/450V	1	2008
SHI	MSC	10000TEU CONTAINER VESSEL	H1710	2100KVA	6600/450V	3	2008
SHI	MSC	10000TEU CONTAINER VESSEL	H1710	4200KVA	6600/450V	2	2008
SHI	MSC	10000TEU CONTAINER VESSEL	H1711	1500KVA	6600/450V	1	2008
SHI	MSC	10000TEU CONTAINER VESSEL	H1711	1900KVA	6600/450V	1	2008
SHI	MSC	10000TEU CONTAINER VESSEL	H1711	2100KVA	6600/450V	3	2008
SHI	MSC	10000TEU CONTAINER VESSEL	H1711	4200KVA	6600/450V	2	2008
SHI	CMA-CGM	8500TEU CONTAINER VESSEL	H1787	1700KVA	6600/450V	4	2008
SHI	CMA-CGM	8500TEU CONTAINER VESSEL	H1787	3600KVA	6600/450V	2	2008
SHI	P&M PETROBRAS	DRILLSHIP	H7057	2700KVA	11,000/460V	2	2008
SHI	-	2 DOCK 600T G/CRANE #1,2	H8641	3000KVA	6600/500V	1	2008
SHI	-	2 DOCK 600T G/CRANE #1,2	H8641	350KVA	6600/440V	1	2008
SHI	-	2 DOCK 600T G/CRANE #1,2	H8642	3000KVA	6600/500V	1	2008
SHI	-	2 DOCK 600T G/CRANE #1,2	H8642	350KVA	6600/440V	1	2008

M.V EAST RESIN FR

Customer	ShipOwner	Kind of Vessel	Hull No.	Capacity	Voltage	Qty	Delivery
SHI	-	3DOCK 900T G/C	H8643	3000KVA	6600/520V	1	2008
SHI	-	3DOCK 900T G/C	H8643	350KVA	6600/440V	1	2008
SHI	-	3DOCK 900T G/C	H8644	3000KVA	6600/520V	1	2008
SHI	-	3DOCK 900T G/C	H8644	350KVA	6600/440V	1	2008
SHI	-	3DOCK 900T G/C	H8645	3000KVA	6600/520V	1	2008
SHI	-	3DOCK 900T G/C	H8645	350KVA	6600/440V	1	2008
SPP SHIPBUILDING	-	L/C 12,000 TON LIFT'G CAP SKID BARGE	D4000	1250KVA	6600/450V	2	2008
SPP SHIPBUILDING	-	L/C 12,000 TON LIFT'G CAP SKID BARGE	D4000	400KVA	6600/225V	1	2008
SUNGONG SHIPBUILDING	-	80,000TON TLC FLOATING DOCK	F9003	4000KVA	6600/450V	2	2008
STX SHIPBUILDING	-	100K TLC FLOATING DOCK	FLOATING DOCK	1500KVA	6600/225V	2	2008
STX SHIPBUILDING	-	100K TLC FLOATING DOCK	FLOATING DOCK	3000KVA	6600/450V	2	2008
STX SHIPBUILDING	-	100K TLC FLOATING DOCK	FLOATING DOCK	1500KVA	6600/225V	2	2008
STX SHIPBUILDING	-	100K TLC FLOATING DOCK	FLOATING DOCK	3000KVA	6600/450V	2	2008
STX SHIPBUILDING	-	100K TLC FLOATING DOCK	FLOATING DOCK	1500KVA	6600/450V	2	2008
STX SHIPBUILDING	-	100K TLC FLOATING DOCK	FLOATING DOCK	3000KVA	6600/450V	2	2008
STX SHIPBUILDING	-	60K TLC SKID BARGE	M0702	1000KVA	11,000/225V	2	2008
STX SHIPBUILDING	-	60K TLC SKID BARGE	M0702	2000KVA	11,000/390V	2	2008
STX SHIPBUILDING	-	60K TLC SKID BARGE	M0702	3000KVA	11,000/390V	2	2008
CSBC	PETER DOEHLE	6,600TEU CONTAINER VESSEL	H897	2000KVA	6600/450V	4	2009
CSBC	PETER DOEHLE	6,600TEU CONTAINER VESSEL	H897	3500KVA	6600/450V	2	2009
CSBC	PETER DOEHLE	6,600TEU CONTAINER VESSEL	H897	650KVA	6600/450V	12	2009
CSBC	PETER DOEHLE	6,600TEU CONTAINER VESSEL	H898	2000KVA	6600/450V	4	2009
CSBC	PETER DOEHLE	6,600TEU CONTAINER VESSEL	H898	3500KVA	6600/450V	2	2009
CSBC	PETER DOEHLE	6,600TEU CONTAINER VESSEL	H898	650KVA	6600/450V	12	2009
CSBC	PETER DOEHLE	6,600TEU CONTAINER VESSEL	H899	2000KVA	6600/450V	4	2009
CSBC	PETER DOEHLE	6,600TEU CONTAINER VESSEL	H899	3500KVA	6600/450V	2	2009
CSBC	PETER DOEHLE	6,600TEU CONTAINER VESSEL	H899	650KVA	6600/450V	12	2009
CSBC	PETER DOEHLE	6,600TEU CONTAINER VESSEL	H900	2000KVA	6600/450V	4	2009
CSBC	PETER DOEHLE	6,600TEU CONTAINER VESSEL	H900	3500KVA	6600/450V	2	2009
CSBC	PETER DOEHLE	6,600TEU CONTAINER VESSEL	H900	650KVA	6600/450V	12	2009
DSME	-	EXTRA LARGE FLOATING DOCK(RD-4)	G008	1000KVA	11000/230V	1	2009
DSME	KNUTSEN	166,600 M3 LNG CARRIER	H2267	1000KVA	6600/450V	2	2009
DSME	KNUTSEN	166,600 M3 LNG CARRIER	H2267	3500KVA	6600/450V	2	2009
DSME	KNUTSEN	166,600 M3 LNG CARRIER	H2269	1000KVA	6600/450V	2	2009
DSME	KNUTSEN	166,600 M3 LNG CARRIER	H2269	3500KVA	6600/450V	2	2009
DSME	TMT	173,400 CBM LNG CARRIER	H2278	1000KVA	6600/450V	2	2009
DSME	TMT	173,400 CBM LNG CARRIER	H2278	3500KVA	6600/450V	2	2009
DSME	MSC	13,230 TEU CONTAINERSHIP	H4137	4000KVA	6600/450V	2	2009
DSME	MSC	13,230 TEU CONTAINERSHIP	H4137	750KVA	6600/450V	14	2009

M.V EAST RESIN FR

Customer	ShipOwner	Kind of Vessel	Hull No.	Capacity	Voltage	Qty	Delivery
DSME	MSC	13,230 TEU CONTAINERSHIP	H4138	4000KVA	6600/450V	2	2009
DSME	MSC	13,230 TEU CONTAINERSHIP	H4138	750KVA	6600/450V	14	2009
DSME	NRS	4,600 TEU CONTAINERSHIP	H4141	4000KVA	450/6600V	1	2009
DSME	NRS	4,600 TEU CONTAINERSHIP	H4142	4000KVA	450/6600V	1	2009
DSME	NRS	4,600 TEU CONTAINERSHIP	H4143	4000KVA	450/6600V	1	2009
DSME	NRS	NRS 8400TEU CONTAINERSHIP	H4152	4000KVA	6600/450V	2	2009
DSME	NRS	NRS 8400TEU CONTAINERSHIP	H4152	630KVA	6600/450V	12	2009
DSME	NRS	NRS 8400TEU CONTAINERSHIP	H4153	4000KVA	6600/450V	2	2009
DSME	NRS	NRS 8400TEU CONTAINERSHIP	H4153	630KVA	6600/450V	12	2009
DSME	NRS	NRS 8400TEU CONTAINERSHIP	H4154	4000KVA	6600/450V	2	2009
DSME	NRS	NRS 8400TEU CONTAINERSHIP	H4154	630KVA	6600/450V	12	2009
DSME	NRS	NRS 8400TEU CONTAINERSHIP	H4155	4000KVA	6600/450V	2	2009
DSME	NRS	NRS 8400TEU CONTAINERSHIP	H4155	630KVA	6600/450V	12	2009
DSME	CMA-CGM	13,300 TEU CONTAINERSHIP	H4157	4000KVA	6600/450V	2	2009
DSME	CMA-CGM	13,300 TEU CONTAINERSHIP	H4157	750KVA	6600/450V	12	2009
DSME	CMA-CGM	13,300 TEU CONTAINERSHIP	H4158	4000KVA	6600/450V	2	2009
DSME	CMA-CGM	13,300 TEU CONTAINERSHIP	H4158	750KVA	6600/450V	12	2009
DSME	CMA-CGM	13,300 TEU CONTAINERSHIP	H4159	4000KVA	6600/450V	2	2009
DSME	CMA-CGM	13,300 TEU CONTAINERSHIP	H4159	750KVA	6600/450V	12	2009
DSME	CMA-CGM	13,300 TEU CONTAINERSHIP	H4160	4000KVA	6600/450V	2	2009
DSME	CMA-CGM	13,300 TEU CONTAINERSHIP	H4160	750KVA	6600/450V	12	2009
DSME	NRS	4,600TEU CONTAINERSHIP	H4164	4000KVA	450/6600V	1	2009
DSME	NRS	4,600TEU CONTAINERSHIP	H4165	4000KVA	450/6600V	1	2009
DSME	NRS	8400TEU CONTAINER SHIP	H4175	4000KVA	6600/450V	2	2009
DSME	NRS	8400TEU CONTAINER SHIP	H4175	630KVA	6600/450V	12	2009
DSME	NRS	8400TEU CONTAINER SHIP	H4176	4000KVA	6600/450V	2	2009
DSME	NRS	8400TEU CONTAINER SHIP	H4176	630KVA	6600/450V	12	2009
DSME	NRS	8400TEU CONTAINER SHIP	H4177	4000KVA	6600/450V	2	2009
DSME	NRS	8400TEU CONTAINER SHIP	H4177	630KVA	6600/450V	12	2009
DSME	C.POFFEN	12,600 TEU CONTAINERSHIP	H4178	4000KVA	6600/450V	2	2009
DSME	C.POFFEN	12,600 TEU CONTAINERSHIP	H4178	750KVA	6600/450V	14	2009
DSME	C.POFFEN	12,600 TEU CONTAINERSHIP	H4179	4000KVA	6600/450V	2	2009
DSME	C.POFFEN	12,600 TEU CONTAINERSHIP	H4179	750KVA	6600/450V	14	2009
DSME	C.POFFEN	12,600 TEU CONTAINERSHIP	H4180	4000KVA	6600/450V	2	2009
DSME	C.POFFEN	12,600 TEU CONTAINERSHIP	H4180	750KVA	6600/450V	14	2009
DSME	C.POFFEN	12,600 TEU CONTAINERSHIP	H4181	4000KVA	6600/450V	2	2009
DSME	C.POFFEN	12,600 TEU CONTAINERSHIP	H4181	750KVA	6600/450V	14	2009
DSME	C.POFFEN	12,600 TEU CONTAINERSHIP	H4182	750KVA	6600/450V	14	2009
DSME	C.POFFEN	12,600 TEU CONTAINERSHIP	H4182	4000KVA	6600/450V	2	2009

M.V EAST RESIN JR

Customer	ShipOwner	Kind of Vessel	Hull No.	Capacity	Voltage	Qty	Delivery
HANJIN	HANJIN	LOAD BANK(SUBIC SHIPYARD)	LOAD BANK	6000KVA	6600-3300/450V	3	2009
HHI	-	11,400 TEU CLASS CONTAINER CARRIER	H1955	1900KVA	6600/450V	2	2009
HHI	-	11,400 TEU CLASS CONTAINER CARRIER	H1955	1900KVA	6600/450V	2	2009
HHI	-	11,400 TEU CLASS CONTAINER CARRIER	H1955	2200KVA	6600/450V	2	2009
HHI		8.6K TEU CONTAINER VESSEL	H2076	690KVA	6600/450V	2	2009
HHI		8.6K TEU CONTAINER VESSEL	H2076	600KVA	6600/450V	2	2009
HHI		8.6K TEU CONTAINER VESSEL	H2076	250KVA	6600/690V	1	2009
HHI		8.6K TEU CONTAINER VESSEL	H2076	600KVA	6600/690V	2	2009
HHI		8.6K TEU CONTAINER VESSEL	H2095	690KVA	6600/450V	2	2009
HHI		8.6K TEU CONTAINER VESSEL	H2095	600KVA	6600/450V	2	2009
HHI		8.6K TEU CONTAINER VESSEL	H2095	250KVA	6600/690V	1	2009
HHI		8.6K TEU CONTAINER VESSEL	H2095	600KVA	6600/690V	2	2009
HHI		8.6K TEU CONTAINER VESSEL	H2096	690KVA	6600/450V	2	2009
HHI		8.6K TEU CONTAINER VESSEL	H2096	600KVA	6600/450V	2	2009
HHI		8.6K TEU CONTAINER VESSEL	H2096	250KVA	6600/690V	1	2009
HHI		8.6K TEU CONTAINER VESSEL	H2096	600KVA	6600/690V	2	2009
HHI		8.6K TEU CONTAINER VESSEL	H2097	690KVA	6600/450V	2	2009
HHI		8.6K TEU CONTAINER VESSEL	H2097	600KVA	6600/450V	2	2009
HHI		8.6K TEU CONTAINER VESSEL	H2097	250KVA	6600/690V	1	2009
HHI		8.6K TEU CONTAINER VESSEL	H2097	600KVA	6600/690V	2	2009
HHI		8.6K TEU CONTAINER VESSEL	H2098	690KVA	6600/450V	2	2009
HHI		8.6K TEU CONTAINER VESSEL	H2098	600KVA	6600/450V	2	2009
HHI		8.6K TEU CONTAINER VESSEL	H2098	600KVA	6600/690V	2	2009
HHI		8.6K TEU CONTAINER VESSEL	H2098	250KVA	6600/690V	1	2009
HHI			H2124	2100KVA	440/6600V	1	2009
PILS CO., LTD.	-	130,000 TLC FLOATING DOCK(G4)	-	1500KVA	6600/225V	4	2009
PILS CO., LTD.	-	130,000 TLC FLOATING DOCK(G4)	-	2000KVA	6600/450V	4	2009
PILS CO., LTD.	-	130,000 TLC FLOATING DOCK(G4)	-	2000KVA	6600/450V	2	2009
PILS CO., LTD.	-	130,000 TLC FLOATING DOCK(G4)	-	3000KVA	6600/450V	2	2009
SHI	LEIF HOEGH	145,800 m3 LNG CARRIER	H1689	900KVA	6600/450V	2	2009
SHI	LEIF HOEGH	145,800 m3 LNG CARRIER	H1689	3400KVA	6600/450V	2	2009
SHI	LEIF HOEGH	145,800 m3 LNG CARRIER	H1689	1800KVA	6600/450V	2	2009
SHI	TPI	TPI 25,000 TDW HEAVY LIFT CARRIER	H1702	4600KVA	6600/450V	2	2009
SHI	MSC	10000TEU CONTAINER VESSEL	H1712	1500KVA	6600/450V	1	2009
SHI	MSC	10000TEU CONTAINER VESSEL	H1712	1900KVA	6600/450V	1	2009
SHI	MSC	10000TEU CONTAINER VESSEL	H1712	2100KVA	6600/450V	3	2009
SHI	MSC	10000TEU CONTAINER VESSEL	H1712	4200KVA	6600/450V	2	2009
SHI	MSC	10000TEU CONTAINER VESSEL	H1713	1500KVA	6600/450V	1	2009
SHI	MSC	10000TEU CONTAINER VESSEL	H1713	1900KVA	6600/450V	1	2009

M.V EAST RESIN FR

Customer	ShipOwner	Kind of Vessel	Hull No.	Capacity	Voltage	Qty	Delivery
SHI	MSC	10000TEU CONTAINER VESSEL	H1713	2100KVA	6600/450V	3	2009
SHI	MSC	10000TEU CONTAINER VESSEL	H1713	4200KVA	6600/450V	2	2009
SHI	MSC	10000TEU CONTAINER VESSEL	H1714	1500KVA	6600/450V	1	2009
SHI	MSC	10000TEU CONTAINER VESSEL	H1714	1900KVA	6600/450V	1	2009
SHI	MSC	10000TEU CONTAINER VESSEL	H1714	2100KVA	6600/450V	3	2009
SHI	MSC	10000TEU CONTAINER VESSEL	H1714	4200KVA	6600/450V	2	2009
SHI	MSC	10000TEU CONTAINER VESSEL	H1715	1500KVA	6600/450V	1	2009
SHI	MSC	10000TEU CONTAINER VESSEL	H1715	1900KVA	6600/450V	1	2009
SHI	MSC	10000TEU CONTAINER VESSEL	H1715	2100KVA	6600/450V	3	2009
SHI	MSC	10000TEU CONTAINER VESSEL	H1715	4200KVA	6600/450V	2	2009
SHI	FLEX	170K DF LNG PRODUCER	H1761	2400KVA	6600/450V	2	2009
SHI	FLEX	170K DF LNG PRODUCER	H1761	3650KVA	6600/450V	2	2009
SHI	CMA-CGM	8500TEU CONTAINER VESSEL	H1788	1700KVA	6600/450V	4	2009
SHI	CMA-CGM	8500TEU CONTAINER VESSEL	H1788	3600KVA	6600/450V	2	2009
SHI	CMA-CGM	8500TEU CONTAINER VESSEL	H1789	1700KVA	6600/450V	4	2009
SHI	CMA-CGM	8500TEU CONTAINER VESSEL	H1789	3600KVA	6600/450V	2	2009
SHI	P&M	PETROBRAS DRILLSHIP	H7061	2700KVA	11,000/460V	2	2009
STX SHIPBUILDING	-	FLOATING DOCK	FLOATING DOCK	1500KVA	6600/450V	2	2009
STX SHIPBUILDING	-	FLOATING DOCK	FLOATING DOCK	3000KVA	6600/450V	1	2009
STX SHIPBUILDING	-	FLOATING DOCK	FLOATING DOCK	1000KVA	6600/225V	1	2009
STX SHIPBUILDING	STX	LOAD BANK	LOAD BANK	5000KVA	6600/440V	3	2009
STX SHIPBUILDING	NIKI	12,400 TEU CONTAINER VESSEL	S3011	4200KVA	6600/450V	2	2009
STX SHIPBUILDING	NIKI	12,400 TEU CONTAINER VESSEL	S3011	690KVA	6600/440V	22	2009
STX SHIPBUILDING	NIKI	12,400 TEU CONTAINER VESSEL	S3012	4200KVA	6600/450V	2	2009
STX SHIPBUILDING	NIKI	12,400 TEU CONTAINER VESSEL	S3012	690KVA	6600/440V	22	2009
DSME	KNUTSEN	166,600 M3 LNG CARRIER	H2274	1000KVA	6600/450V	2	2010
DSME	KNUTSEN	166,600 M3 LNG CARRIER	H2274	3500KVA	6600/450V	2	2010
DSME	KNUTSEN	173,400 CBM LNG CARRIER	H2275	3500KVA	6600/450V	2	2010
DSME	KNUTSEN	173,400 CBM LNG CARRIER	H2275	1000KVA	6600/450V	2	2010
DSME	ANGOLA	160,500 CBM LNG CARRIER	H2280	3500KVA	6600/450V	2	2010
DSME	ANGOLA	160,500 CBM LNG CARRIER	H2280	700KVA	6600/450V	2	2010
DSME	ANGOLA	160,500 CBM LNG CARRIER	H2281	3500KVA	6600/450V	2	2010
DSME	ANGOLA	160,500 CBM LNG CARRIER	H2281	700KVA	6600/450V	2	2010
DSME	MSC	13,230 TEU CONTAINERSHIP	H4139	4000KVA	6600/450V	2	2010
DSME	MSC	13,230 TEU CONTAINERSHIP	H4139	750KVA	6600/450V	14	2010
DSME	HAMBURG SUD	7,090 TEU CONTAINERSHIP	H4148	5000KVA	6600/450V	2	2010
DSME	HAMBURG SUD	7,090 TEU CONTAINERSHIP	H4148	800KVA	6600/450V	22	2010
DSME	HAMBURG SUD	7,090 TEU CONTAINERSHIP	H4149	5000KVA	6600/450V	2	2010
DSME	HAMBURG SUD	7,090 TEU CONTAINERSHIP	H4149	800KVA	6600/450V	22	2010

M.V EAST RESIN TR

Customer	ShipOwner	Kind of Vessel	Hull No.	Capacity	Voltage	Qty	Delivery
DSME	HAMBURG SUD	7,090 TEU CONTAINERSHIP	H4150	5000KVA	6600/450V	2	2010
DSME	HAMBURG SUD	7,090 TEU CONTAINERSHIP	H4150	800KVA	6600/450V	22	2010
DSME	HAMBURG SUD	7,090 TEU CONTAINERSHIP	H4151	5000KVA	6600/450V	2	2010
DSME	HAMBURG SUD	7,090 TEU CONTAINERSHIP	H4151	800KVA	6600/450V	22	2010
DSME	CMA-CGM	13,300 TEU CONTAINERSHIP	H4161	4000KVA	6600/450V	2	2010
DSME	CMA-CGM	13,300 TEU CONTAINERSHIP	H4161	750KVA	6600/450V	12	2010
DSME	CMA-CGM	13,300 TEU CONTAINERSHIP	H4162	4000KVA	6600/450V	2	2010
DSME	CMA-CGM	13,300 TEU CONTAINERSHIP	H4162	750KVA	6600/450V	12	2010
DSME	CMA-CGM	13,300 TEU CONTAINERSHIP	H4163	4000KVA	6600/450V	2	2010
DSME	CMA-CGM	13,300 TEU CONTAINERSHIP	H4163	750KVA	6600/450V	12	2010
DSME	C.POFFEN	12,600 TEU CONTAINERSHIP	H4183	4000KVA	6600/450V	2	2010
DSME	C.POFFEN	12,600 TEU CONTAINERSHIP	H4183	750KVA	6600/450V	14	2010
DSME	C.POFFEN	12,600 TEU CONTAINERSHIP	H4184	4000KVA	6600/450V	2	2010
DSME	C.POFFEN	12,600 TEU CONTAINERSHIP	H4184	750KVA	6600/450V	14	2010
DSME	C.POFFEN	12,600 TEU CONTAINERSHIP	H4185	4000KVA	6600/450V	2	2010
DSME	C.POFFEN	12,600 TEU CONTAINERSHIP	H4185	750KVA	6600/450V	14	2010
DSME	C.POFFEN	12,600 TEU CONTAINERSHIP	H4186	4000KVA	6600/450V	2	2010
DSME	C.POFFEN	12,600 TEU CONTAINERSHIP	H4186	750KVA	6600/450V	14	2010
DSME	NOL	10,700 TEU CONTAINERSHIP	H4191	4000KVA	6600/450V	2	2010
DSME	NOL	10,700 TEU CONTAINERSHIP	H4191	630KVA	6600/450V	14	2010
DSME	NOL	10,700 TEU CONTAINERSHIP	H4192	4000KVA	6600/450V	2	2010
DSME	NOL	10,700 TEU CONTAINERSHIP	H4192	630KVA	6600/450V	14	2010
DSME	C.POFFEN	13,050 TEU CONTAINERSHIP	H4195	4000KVA	6600/450V	2	2010
DSME	C.POFFEN	13,050 TEU CONTAINERSHIP	H4195	750KVA	6600/450V	14	2010
DSME	C.POFFEN	13,050 TEU CONTAINERSHIP	H4196	4000KVA	6600/450V	2	2010
DSME	C.POFFEN	13,050 TEU CONTAINERSHIP	H4196	750KVA	6600/450V	14	2010
DSME	C.POFFEN	13,050 TEU CONTAINERSHIP	H4197	4000KVA	6600/450V	2	2010
DSME	C.POFFEN	13,050 TEU CONTAINERSHIP	H4197	750KVA	6600/450V	14	2010
DSME	C.POFFEN	13,050 TEU CONTAINERSHIP	H4198	4000KVA	6600/450V	2	2010
DSME	C.POFFEN	13,050 TEU CONTAINERSHIP	H4198	750KVA	6600/450V	14	2010
DSME	C.POFFEN	13,050 TEU CONTAINERSHIP	H4199	4000KVA	6600/450V	2	2010
DSME	A.P.MOLLER	7,450 TEU CONTAINERSHIP	H4214	800KVA	6600/450V	30	2010
DSME	A.P.MOLLER	7,450 TEU CONTAINERSHIP	H4214	4500KVA	6600/450V	2	2010
DSME	A.P.MOLLER	7,450 TEU CONTAINERSHIP	H4215	800KVA	6600/450V	30	2010
DSME	A.P.MOLLER	7,450 TEU CONTAINERSHIP	H4215	4500KVA	6600/450V	2	2010
DSME	KNUTSEN	156,000 DWT SHUTTLE TANK	H5316	4000KVA	6600/445V	2	2010
HHI		8.6K TEU CONTAINER VESSEL	H2077	690KVA	6600/450V	2	2010
HHI		8.6K TEU CONTAINER VESSEL	H2077	600KVA	6600/450V	2	2010
HHI		8.6K TEU CONTAINER VESSEL	H2077	250KVA	6600/690V	1	2010

M.V EAST RESIN FR

Customer	ShipOwner	Kind of Vessel	Hull No.	Capacity	Voltage	Qty	Delivery
HHI		8.6K TEU CONTAINER VESSEL	H2077	600KVA	6600/690V	2	2010
HHI			H2125	2100KVA	440/6600V	1	2010
HHI			H2126	2100KVA	440/6600V	1	2010
HHI			H2127	2100KVA	440/6600V	1	2010
HHI			H2128	2100KVA	440/6600V	1	2010
HHI			H2130	2100KVA	440/6600V	1	2010
HHI	HYPROC	35,500 CBM CLASS LPG/NH3 CARRIER	H2360	1200KVA	440/3300V	1	2010
HHI	HYPROC	35,500 CBM CLASS LPG/NH3 CARRIER	H2361	1200KVA	440/3300V	1	2010
SHI	FLEX	170K DF LNG PRODUCER	H1762	2400KVA	6600/450V	2	2010
SHI	FLEX	170K DF LNG PRODUCER	H1762	3650KVA	6600/450V	2	2010
SHI	CMA-CGM	8500TEU CONTAINER VESSEL	H1790	1700KVA	6600/450V	4	2010
SHI	CMA-CGM	8500TEU CONTAINER VESSEL	H1790	3600KVA	6600/450V	2	2010
SHI	CMA-CGM	8500TEU CONTAINER VESSEL	H1791	1700KVA	6600/450V	4	2010
SHI	CMA-CGM	8500TEU CONTAINER VESSEL	H1791	3600KVA	6600/450V	2	2010
SHI	CMA-CGM	8500TEU CONTAINER VESSEL	H1792	1700KVA	6600/450V	4	2010
SHI	CMA-CGM	8500TEU CONTAINER VESSEL	H1792	3600KVA	6600/450V	2	2010
SHI	CSCL	13,300 TEU CONTAINER VESSEL	H1819	2000KVA	6600/450V	5	2010
SHI	CSCL	13,300 TEU CONTAINER VESSEL	H1819	3600KVA	6600/450V	2	2010
SHI	CSCL	13,300 TEU CONTAINER VESSEL	H1820	2000KVA	6600/450V	5	2010
SHI	CSCL	13,300 TEU CONTAINER VESSEL	H1820	3600KVA	6600/450V	2	2010
SHI	CSCL	13,300 TEU CONTAINER VESSEL	H1821	2000KVA	6600/450V	5	2010
SHI	CSCL	13,300 TEU CONTAINER VESSEL	H1821	3600KVA	6600/450V	2	2010
SHI	CSCL	13,300 TEU CONTAINER VESSEL	H1822	2000KVA	6600/450V	5	2010
SHI	CSCL	13,300 TEU CONTAINER VESSEL	H1822	3600KVA	6600/450V	2	2010
SHI	CSCL	13,300 TEU CONTAINER VESSEL	H1823	2000KVA	6600/450V	5	2010
SHI	CSCL	13,300 TEU CONTAINER VESSEL	H1823	3600KVA	6600/450V	2	2010
SHI	FLEX	170K DF LNG PRODUCER	H1839	2400KVA	6600/450V	2	2010
SHI	FLEX	170K DF LNG PRODUCER	H1839	3650KVA	6600/450V	2	2010
SHI	SEASPAN	4500T CONTAINER VESSEL	H1851	4500KVA	6600/440V	1	2010
SHI	SEASPAN	4500T CONTAINER VESSEL	H1852	4500KVA	6600/440V	1	2010
SHI	SEASPAN	4500T CONTAINER VESSEL	H1853	2200KVA	440/6600V	1	2010
SHI	SEASPAN	4500T CONTAINER VESSEL	H1854	2200KVA	440/6600V	1	2010
SHI	SCHAHIN	DRILLSHIP	H7079	2700KVA	11KV/460V	2	2010
SHI	SCHAHIN	DRILLSHIP	H7082	2700KVA	11KV/460V	2	2010
STX SHIPBUILDING	NIKI	12,400 TEU CONTAINER VESSEL	S3015	4200KVA	6600/450V	2	2010
STX SHIPBUILDING	NIKI	12,400 TEU CONTAINER VESSEL	S3015	690KVA	6600/440V	22	2010
STX SHIPBUILDING	NIKI	12,400 TEU CONTAINER VESSEL	S3016	4200KVA	6600/450V	2	2010
STX SHIPBUILDING	NIKI	12,400 TEU CONTAINER VESSEL	S3016	690KVA	6600/440V	22	2010
STX SHIPBUILDING	NIKI	12,400 TEU CONTAINER VESSEL	S3018	4200KVA	6600/450V	2	2010

M.V EAST RESIN FR

Customer	ShipOwner	Kind of Vessel	Hull No.	Capacity	Voltage	Qty	Delivery
STX SHIPBUILDING	NIKI	12,400 TEU CONTAINER VESSEL	S3018	690KVA	6600/440V	22	2010
STX SHIPBUILDING	NIKI	12,400 TEU CONTAINER VESSEL	S3021	4200KVA	6600/450V	2	2010
STX SHIPBUILDING	NIKI	12,400 TEU CONTAINER VESSEL	S3021	690KVA	6600/440V	22	2010
DEWIND	-	WIND TURBINE	-	2500KVA	20kV/690V	2	2011
CSBC	YML	8,240 TEU CONTAINER VESSEL	H957	1700KVA	6600/450V	5	2011
CSBC	YML	8,240 TEU CONTAINER VESSEL	H957	1700KVA	6600/450V	1	2011
CSBC	YML	8,240 TEU CONTAINER VESSEL	H957	3800KVA	6600/450V	2	2011
CSBC	YML	8,240 TEU CONTAINER VESSEL	H958	1700KVA	6600/450V	5	2011
CSBC	YML	8,240 TEU CONTAINER VESSEL	H958	1700KVA	6600/450V	1	2011
CSBC	YML	8,240 TEU CONTAINER VESSEL	H958	3800KVA	6600/450V	2	2011
CSBC	YML	8,240 TEU CONTAINER VESSEL	H959	1700KVA	6600/450V	5	2011
CSBC	YML	8,240 TEU CONTAINER VESSEL	H959	1700KVA	6600/450V	1	2011
CSBC	YML	8,240 TEU CONTAINER VESSEL	H959	3800KVA	6600/450V	2	2011
DSME	ANGOLA	160,500 CBM LNG CARRIER	H2282	3500KVA	6600/450V	2	2011
DSME	ANGOLA	160,500 CBM LNG CARRIER	H2282	700KVA	6600/450V	2	2011
DSME	NOL	10,700 TEU CONTAINERSHIP	H4193	4000KVA	6600/450V	2	2011
DSME	NOL	10,700 TEU CONTAINERSHIP	H4193	630KVA	6600/450V	14	2011
DSME	NOL	10,700 TEU CONTAINERSHIP	H4194	4000KVA	6600/450V	2	2011
DSME	NOL	10,700 TEU CONTAINERSHIP	H4194	630KVA	6600/450V	14	2011
DSME	C.POFFEN	13,050 TEU CONTAINERSHIP	H4199	750KVA	6600/450V	14	2011
DSME	C.POFFEN	13,050 TEU CONTAINERSHIP	H4200	4000KVA	6600/450V	2	2011
DSME	C.POFFEN	13,050 TEU CONTAINERSHIP	H4200	750KVA	6600/450V	14	2011
DSME	C.POFFEN	13,050 TEU CONTAINERSHIP	H4201	4000KVA	6600/450V	2	2011
DSME	C.POFFEN	13,050 TEU CONTAINERSHIP	H4201	750KVA	6600/450V	14	2011
DSME	C.POFFEN	13,050 TEU CONTAINERSHIP	H4202	4000KVA	6600/450V	2	2011
DSME	C.POFFEN	13,050 TEU CONTAINERSHIP	H4202	750KVA	6600/450V	14	2011
DSME	C.POFFEN	13,050 TEU CONTAINERSHIP	H4203	4000KVA	6600/450V	2	2011
DSME	C.POFFEN	13,050 TEU CONTAINERSHIP	H4203	750KVA	6600/450V	14	2011
DSME	A.P.MOLLER	7,450 TEU CONTAINERSHIP	H4216	4500KVA	6600/450V	2	2011
DSME	A.P.MOLLER	7,450 TEU CONTAINERSHIP	H4216	800KVA	6600/450V	30	2011
DSME	A.P.MOLLER	7,450 TEU CONTAINERSHIP	H4217	4500KVA	6600/450V	2	2011
DSME	A.P.MOLLER	7,450 TEU CONTAINERSHIP	H4217	800KVA	6600/450V	30	2011
DSME	A.P.MOLLER	7,450 TEU CONTAINERSHIP	H4218	4500KVA	6600/450V	2	2011
DSME	A.P.MOLLER	7,450 TEU CONTAINERSHIP	H4218	800KVA	6600/450V	30	2011
DSME	A.P.MOLLER	7,450 TEU CONTAINERSHIP	H4221	4500KVA	6600/450V	2	2011
DSME	A.P.MOLLER	7,450 TEU CONTAINERSHIP	H4221	800KVA	6600/450V	30	2011
DSME	A.P.MOLLER	7,450 TEU CONTAINERSHIP	H4222	4500KVA	6600/450V	2	2011
DSME	A.P.MOLLER	7,450 TEU CONTAINERSHIP	H4222	800KVA	6600/450V	30	2011
DSME	A.P.MOLLER	7,450 TEU CONTAINERSHIP	H4223	4500KVA	6600/450V	2	2011

M.V EAST RESIN FR

Customer	Ship Owner	Kind of Vessel	Hull No.	Capacity	Voltage	Qty	Delivery
DSME	A.P.MOLLER	7,450 TEU CONTAINERSHIP	H4223	800KVA	6600/450V	30	2011
DSME	A.P.MOLLER	7,450 TEU CONTAINERSHIP	H4224	4500KVA	6600/450V	2	2011
DSME	A.P.MOLLER	7,450 TEU CONTAINERSHIP	H4224	800KVA	6600/450V	30	2011
DSME	IGNAZIO MESSINA	45,200 DWT RO-RO VESSEL	H4465	2000KVA	440/6600V	2	2011
DSME	IGNAZIO MESSINA	45,200 DWT RO-RO VESSEL	H4465	2000KVA	440/6600V	1	2011
DSME	IGNAZIO MESSINA	45,200 DWT RO-RO VESSEL	H4466	2000KVA	440/6600V	2	2011
DSME	IGNAZIO MESSINA	45,200 DWT RO-RO VESSEL	H4466	2000KVA	440/6600V	1	2011
HHI			H2133	2100KVA	440/6600V	1	2011
HHI		CONTAINER VESSEL	H2154	650KVA	6600/450V	6	2011
HHI		CONTAINER VESSEL	H2154	4000KVA	6600/450V	2	2011
HHI		CONTAINER VESSEL	H2155	650KVA	6600/450V	6	2011
HHI		CONTAINER VESSEL	H2155	4000KVA	6600/450V	2	2011
HHI		CONTAINER VESSEL	H2156	650KVA	6600/450V	6	2011
HHI		CONTAINER VESSEL	H2156	4000KVA	6600/450V	2	2011
HHI		CONTAINER VESSEL	H2157	650KVA	6600/450V	6	2011
HHI		CONTAINER VESSEL	H2157	4000KVA	6600/450V	2	2011
HHI		10,100TEU CONTAINER	H2158	2000KVA	6600/450V	2	2011
HHI		10,100TEU CONTAINER	H2158	2000KVA	6600/450V	4	2011
HHI		10,100TEU CONTAINER	H2159	2000KVA	6600/450V	2	2011
HHI		10,100TEU CONTAINER	H2159	2000KVA	6600/450V	4	2011
HHI		10,100TEU CONTAINER	H2160	2000KVA	6600/450V	2	2011
HHI		10,100TEU CONTAINER	H2160	2000KVA	6600/450V	4	2011
HHI		10,100TEU CONTAINER	H2161	2000KVA	6600/450V	2	2011
HHI		10,100TEU CONTAINER	H2161	2000KVA	6600/450V	4	2011
HHI		CONTAINER VESSEL	H2164	650KVA	6600/450V	6	2011
HHI		CONTAINER VESSEL	H2164	4000KVA	6600/450V	2	2011
HHI		CONTAINER VESSEL	H2165	650KVA	6600/450V	6	2011
HHI		CONTAINER VESSEL	H2165	4000KVA	6600/450V	2	2011
HHI		CONTAINER VESSEL	H2166	650KVA	6600/450V	6	2011
HHI		CONTAINER VESSEL	H2166	4000KVA	6600/450V	2	2011
HHI		CONTAINER VESSEL	H2167	650KVA	6600/450V	6	2011
HHI		CONTAINER VESSEL	H2167	4000KVA	6600/450V	2	2011
HHI			H2230	650KVA	6600/450V	6	2011
HHI			H2231	650KVA	6600/450V	6	2011
HHI			H2232	650KVA	6600/450V	6	2011
HHI			S419	2100KVA	440/6600V	1	2011
HHI			S420	2100KVA	440/6600V	1	2011
HHI			S456	650KVA	6600/450V	6	2011
HHI			S456	650KVA	6600/450V	6	2011

M.V EAST RESIN TR

Customer	ShipOwner	Kind of Vessel	Hull No.	Capacity	Voltage	Qty	Delivery
KITASHIBA	-	FOR RECOVERY OF EARTHQUAKE	-	1000KVA	6600/440-220V	2	2011
KITASHIBA	-	FOR RECOVERY OF EARTHQUAKE	-	500KVA	6600/440-220V	1	2011
SHI	CSCL	13,300 TEU CONTAINER VESSEL	H1824	2000KVA	6600/450V	5	2011
SHI	CSCL	13,300 TEU CONTAINER VESSEL	H1824	3600KVA	6600/450V	2	2011
SHI	CSCL	13,300 TEU CONTAINER VESSEL	H1825	2000KVA	6600/450V	5	2011
SHI	CSCL	13,300 TEU CONTAINER VESSEL	H1825	3600KVA	6600/450V	2	2011
SHI	CSCL	13,300 TEU CONTAINER VESSEL	H1826	2000KVA	6600/450V	5	2011
SHI	CSCL	13,300 TEU CONTAINER VESSEL	H1826	3600KVA	6600/450V	2	2011
SHI	ZIM	12,600 TEU CONTAINER VESSEL	H1840	2000KVA	6600/450V	6	2011
SHI	ZIM	12,600 TEU CONTAINER VESSEL	H1840	4200KVA	6600/450V	2	2011
SHI	ZIM	12,600 TEU CONTAINER VESSEL	H1841	2000KVA	6600/450V	6	2011
SHI	ZIM	12,600 TEU CONTAINER VESSEL	H1841	4200KVA	6600/450V	2	2011
SHI	ZIM	12,600 TEU CONTAINER VESSEL	H1842	2000KVA	6600/450V	6	2011
SHI	ZIM	12,600 TEU CONTAINER VESSEL	H1842	4200KVA	6600/450V	2	2011
SHI	ZIM	12,600 TEU CONTAINER VESSEL	H1843	2000KVA	6600/450V	6	2011
SHI	ZIM	12,600 TEU CONTAINER VESSEL	H1843	4200KVA	6600/450V	2	2011
SHI	ZIM	12,600 TEU CONTAINER VESSEL	H1844	2000KVA	6600/450V	6	2011
SHI	ZIM	12,600 TEU CONTAINER VESSEL	H1844	4200KVA	6600/450V	2	2011
SHI	ZIM	12,600 TEU CONTAINER VESSEL	H1846	2000KVA	6600/450V	6	2011
SHI	ZIM	12,600 TEU CONTAINER VESSEL	H1846	4200KVA	6600/450V	2	2011
SHI	FLEX	170K DF LNG PRODUCER	H1850	2400KVA	6600/450V	2	2011
SHI	FLEX	170K DF LNG PRODUCER	H1850	3650KVA	6600/450V	2	2011
SHI	SEASPAN	4500T CONTAINER VESSEL	H1855	2200KVA	440/6600V	1	2011
SHI	GASLOG	155K LNG CARRIER	H1946	2800KVA	6600/450V	2	2011
SHI	GASLOG	155K LNG CARRIER	H1946	1200KVA	6600/450V	2	2011
SHI	AET	105,000DWT SHUTTEL TANKER	H1966	2000KVA	6600/450V	2	2011
SHI	AET	105,000DWT SHUTTEL TANKER	H1967	2000KVA	6600/450V	2	2011
STX SHIPBUILDING	NIKI	12,400 TEU CONTAINER VESSEL	S3022	4200KVA	6600/450V	2	2011
STX SHIPBUILDING	NIKI	12,400 TEU CONTAINER VESSEL	S3022	690KVA	6600/440V	22	2011
STX SHIPBUILDING	NIKI	12,400 TEU CONTAINER VESSEL	S3023	4200KVA	6600/450V	2	2011
STX SHIPBUILDING	NIKI	12,400 TEU CONTAINER VESSEL	S3023	690KVA	6600/440V	22	2011
STX SHIPBUILDING	NIKI	12,400 TEU CONTAINER VESSEL	S3024	4200KVA	6600/450V	2	2011
STX SHIPBUILDING	NIKI	12,400 TEU CONTAINER VESSEL	S3024	690KVA	6600/440V	22	2011
STX(DALIAN)	STX PAN PCEAN	24KDWT SEMI-SUBMERSIBLE HEAVY LIFT CARRIER	D2101	3200KVA	6600/450V	2	2011
DSME	A.P.MOLLER	7,450 TEU CONTAINERSHIP	H4219	4500KVA	6600/450V	2	2012
CSBC	YML	8,240 TEU CONTAINER VESSEL	H960	1700KVA	6600/450V	5	2012
CSBC	YML	8,240 TEU CONTAINER VESSEL	H960	1700KVA	6600/450V	1	2012
CSBC	YML	8,240 TEU CONTAINER VESSEL	H960	3800KVA	6600/450V	2	2012
CSBC	YML	8,240 TEU CONTAINER VESSEL	H961	1700KVA	6600/450V	5	2012

M.V EAST RESIN FR

Customer	ShipOwner	Kind of Vessel	Hull No.	Capacity	Voltage	Qty	Delivery
CSBC	YML	8,240 TEU CONTAINER VESSEL	H961	1700KVA	6600/450V	1	2012
CSBC	YML	8,240 TEU CONTAINER VESSEL	H961	3800KVA	6600/450V	2	2012
DSEC	ZODIAC	8,600TEU CONTAINER SHIP	H4091	4000KVA	6600/450V	2	2012
DSEC	ZODIAC	8,600TEU CONTAINER SHIP	H4091	750KVA	6600/450V	14	2012
DSEC	ZODIAC	8,600TEU CONTAINER SHIP	H4092	4000KVA	6600/450V	2	2012
DSEC	ZODIAC	8,600TEU CONTAINER SHIP	H4092	750KVA	6600/450V	14	2012
DSEC	ZODIAC	8,600TEU CONTAINER SHIP	H4093	4000KVA	6600/450V	2	2012
DSEC	ZODIAC	8,600TEU CONTAINER SHIP	H4093	750KVA	6600/450V	14	2012
DSME	SAGA	55K TDW OPEN HATCH GENERAL CARGO	H1218	3500KVA	440/6600V	1	2012
DSME	SAGA	55K TDW OPEN HATCH GENERAL CARGO	H1219	3500KVA	440/6600V	1	2012
DSME	SAGA	55K TDW OPEN HATCH GENERAL CARGO	H1220	3500KVA	440/6600V	1	2012
DSME	SAGA	55K TDW OPEN HATCH GENERAL CARGO	H1221	3500KVA	440/6600V	1	2012
DSME	SAGA	55K TDW OPEN HATCH GENERAL CARGO	H1222	3500KVA	440/6600V	1	2012
DSME	MARAN GAS	159,800 M3 LNG CARRIER	H2288	3500KVA	6600/450V	2	2012
DSME	MARAN GAS	159,800 M3 LNG CARRIER	H2288	1000KVA	6600/450V	2	2012
DSME	AWILCO	155,900 M3 LNG CARRIER	H2289	3500KVA	6600/450V	2	2012
DSME	AWILCO	155,900 M3 LNG CARRIER	H2289	700KVA	6600/450V	2	2012
DSME	AWILCO	155,900 M3 LNG CARRIER	H2290	3500KVA	6600/450V	2	2012
DSME	AWILCO	155,900 M3 LNG CARRIER	H2290	700KVA	6600/450V	2	2012
DSME	MARAN GAS	159,800 M3 LNG CARRIER	H2295	3500KVA	6600/450V	2	2012
DSME	MARAN GAS	159,800 M3 LNG CARRIER	H2295	1000KVA	6600/450V	2	2012
DSME	MARAN GAS	159,800 M3 LNG CARRIER	H2296	3500KVA	6600/450V	2	2012
DSME	MARAN GAS	159,800 M3 LNG CARRIER	H2296	1000KVA	6600/450V	2	2012
DSME	A.P.MOLLER	7,450 TEU CONTAINERSHIP	H4219	800KVA	6600/450V	30	2012
DSME	A.P.MOLLER	7,450 TEU CONTAINERSHIP	H4220	4500KVA	6600/450V	2	2012
DSME	A.P.MOLLER	7,450 TEU CONTAINERSHIP	H4220	800KVA	6600/450V	30	2012
DSME	A.P.MOLLER	7,450 TEU CONTAINERSHIP	H4225	4500KVA	6600/450V	2	2012
DSME	A.P.MOLLER	7,450 TEU CONTAINERSHIP	H4225	800KVA	6600/450V	30	2012
DSME	A.P.MOLLER	7,450 TEU CONTAINERSHIP	H4226	4500KVA	6600/450V	2	2012
DSME	A.P.MOLLER	7,450 TEU CONTAINERSHIP	H4226	800KVA	6600/450V	30	2012
DSME	A.P.MOLLER	7,450 TEU CONTAINERSHIP	H4227	4500KVA	6600/450V	2	2012
DSME	A.P.MOLLER	7,450 TEU CONTAINERSHIP	H4227	800KVA	6600/450V	30	2012
DSME	A.P.MOLLER	7,450 TEU CONTAINERSHIP	H4228	4500KVA	6600/450V	2	2012
DSME	A.P.MOLLER	7,450 TEU CONTAINERSHIP	H4228	800KVA	6600/450V	30	2012
DSME	A.P.MOLLER	7,450 TEU CONTAINERSHIP	H4229	4500KVA	6600/450V	2	2012
DSME	A.P.MOLLER	7,450 TEU CONTAINERSHIP	H4229	800KVA	6600/450V	30	2012
DSME	NOL	10,700TEU CONTAINER SHIP	H4238	4000KVA	6600/450V	2	2012
DSME	NOL	10,700TEU CONTAINER SHIP	H4238	630KVA	6600/450V	12	2012
DSME	NOL	10,700TEU CONTAINER SHIP	H4239	4000KVA	6600/450V	2	2012

M.V EAST RESIN FR

Customer	ShipOwner	Kind of Vessel	Hull No.	Capacity	Voltage	Qty	Delivery
DSME	NOL	10,700TEU CONTAINER SHIP	H4239	630KVA	6600/450V	12	2012
DSME	NOL	8,400TEU CONTAINER SHIP	H4240	4000KVA	6600/450V	2	2012
DSME	NOL	8,400TEU CONTAINER SHIP	H4240	730KVA	6600/450V	12	2012
DSME	NOL	8,400TEU CONTAINER SHIP	H4241	4000KVA	6600/450V	2	2012
DSME	NOL	8,400TEU CONTAINER SHIP	H4241	730KVA	6600/450V	12	2012
DSME	NOL	8,400TEU CONTAINER SHIP	H4242	4000KVA	6600/450V	2	2012
DSME	NOL	8,400TEU CONTAINER SHIP	H4242	730KVA	6600/450V	12	2012
DSME	IGNAZIO MESSINA	45,200 DWT RO-RO VESSEL	H4467	2000KVA	440/6600V	2	2012
DSME	IGNAZIO MESSINA	45,200 DWT RO-RO VESSEL	H4467	2000KVA	440/6600V	1	2012
DSME	IGNAZIO MESSINA	45,200 DWT RO-RO VESSEL	H4468	2000KVA	440/6600V	2	2012
DSME	IGNAZIO MESSINA	45,200 DWT RO-RO VESSEL	H4468	2000KVA	440/6600V	1	2012
HHI			H2233	650KVA	6600/450V	6	2012
HHI			H2234	650KVA	6600/450V	6	2012
HHI			H2235	650KVA	6600/450V	6	2012
HHI			H2236	650KVA	6600/450V	6	2012
HHI			H2237	650KVA	6600/450V	6	2012
HHI			H2238	650KVA	6600/450V	6	2012
SHI	ZIM	12,600TEU CONTAINER VESSEL	H1845	2000KVA	6600/450V	6	2012
SHI	ZIM	12,600TEU CONTAINER VESSEL	H1845	4200KVA	6600/450V	2	2012
SHI	ZIM	12,600TEU CONTAINER VESSEL	H1847	2000KVA	6600/450V	6	2012
SHI	ZIM	12,600TEU CONTAINER VESSEL	H1847	4200KVA	6600/450V	2	2012
SHI	ZIM	12,600TEU CONTAINER VESSEL	H1863	2000KVA	6600/450V	6	2012
SHI	ZIM	12,600TEU CONTAINER VESSEL	H1863	4200KVA	6600/450V	2	2012
SHI	GASLOG	155K LNG CARRIER	H1947	2800KVA	6600/450V	2	2012
SHI	GASLOG	155K LNG CARRIER	H1947	1200KVA	6600/450V	2	2012
SHI	AET	105,000DWT SHUTTEL TANKER	H1968	2000KVA	6600/450V	2	2012
SHI	AET	105,000DWT SHUTTEL TANKER	H1969	2000KVA	6600/450V	2	2012
SHI	AET	105,000DWT SHUTTEL TANKER	H1970	2000KVA	6600/450V	2	2012
SHI	HANJIN	4,600TEU CONTAINER	H1972	4000KVA	440/6600V	1	2012
SHI	HANJIN	4,600TEU CONTAINER	H1973	4000KVA	440/6600V	1	2012
SHI	HANJIN	4,600TEU CONTAINER	H1974	4000KVA	440/6600V	1	2012
SHI	EVERGREEN	8,000TEU CONTAINER VESSEL	H1990	3600KVA	6600/450V	2	2012
SHI	EVERGREEN	8,000TEU CONTAINER VESSEL	H1990	2200KVA	6600/450V	1	2012
SHI	EVERGREEN	8,000TEU CONTAINER VESSEL	H1990	1800KVA	6600/450V	4	2012
SHI	EVERGREEN	8,000TEU CONTAINER VESSEL	H1991	3600KVA	6600/450V	2	2012
SHI	EVERGREEN	8,000TEU CONTAINER VESSEL	H1991	2200KVA	6600/450V	1	2012
SHI	EVERGREEN	8,000TEU CONTAINER VESSEL	H1991	1800KVA	6600/450V	4	2012
SHI	EVERGREEN	8,000TEU CONTAINER VESSEL	H1992	3600KVA	6600/450V	2	2012
SHI	EVERGREEN	8,000TEU CONTAINER VESSEL	H1992	2200KVA	6600/450V	1	2012

M.V EAST RESIN FR

Customer	ShipOwner	Kind of Vessel	Hull No.	Capacity	Voltage	Qty	Delivery
SHI	EVERGEEN	8,000TEU CONTAINER VESSEL	H1992	1800KVA	6600/450V	4	2012
SHI	EVERGEEN	8,000TEU CONTAINER VESSEL	H1993	3600KVA	6600/450V	2	2012
SHI	EVERGEEN	8,000TEU CONTAINER VESSEL	H1993	2200KVA	6600/450V	1	2012
SHI	EVERGEEN	8,000TEU CONTAINER VESSEL	H1993	1800KVA	6600/450V	4	2012
SHI	EVERGEEN	8,000TEU CONTAINER VESSEL	H1994	3600KVA	6600/450V	2	2012
SHI	EVERGEEN	8,000TEU CONTAINER VESSEL	H1994	2200KVA	6600/450V	1	2012
SHI	EVERGEEN	8,000TEU CONTAINER VESSEL	H1994	1800KVA	6600/450V	4	2012
SHI	EVERGEEN	8,000TEU CONTAINER VESSEL	H1995	3600KVA	6600/450V	2	2012
SHI	EVERGEEN	8,000TEU CONTAINER VESSEL	H1995	2200KVA	6600/450V	1	2012
SHI	EVERGEEN	8,000TEU CONTAINER VESSEL	H1995	1800KVA	6600/450V	4	2012
SHI	EVERGEEN	8,000TEU CONTAINER VESSEL	H1996	3600KVA	6600/450V	2	2012
SHI	EVERGEEN	8,000TEU CONTAINER VESSEL	H1996	2200KVA	6600/450V	1	2012
SHI	EVERGEEN	8,000TEU CONTAINER VESSEL	H1996	1800KVA	6600/450V	4	2012
SHI	OOCL	13,000TEU CONTAINER SHIP	H2002	4200KVA	6600/450V	2	2012
SHI	OOCL	13,000TEU CONTAINER SHIP	H2002	2700KVA	6600/450V	3	2012
SHI	OOCL	13,000TEU CONTAINER SHIP	H2002	2200KVA	6600/450V	2	2012
SHI	OOCL	13,000TEU CONTAINER SHIP	H2003	4200KVA	6600/450V	2	2012
SHI	OOCL	13,000TEU CONTAINER SHIP	H2003	2700KVA	6600/450V	3	2012
SHI	OOCL	13,000TEU CONTAINER SHIP	H2003	2200KVA	6600/450V	2	2012
SHI	OOCL	13,000TEU CONTAINER SHIP	H2004	2200KVA	6600/450V	2	2012
SHI	OOCL	13,000TEU CONTAINER SHIP	H2004	2200KVA	6600/450V	2	2012
SHI	OOCL	13,000TEU CONTAINER SHIP	H2004	2200KVA	6600/450V	2	2012
SHI	OOCL	13,000TEU CONTAINER SHIP	H2005	2200KVA	6600/450V	2	2012
SHI	OOCL	13,000TEU CONTAINER SHIP	H2005	2200KVA	6600/450V	2	2012
SHI	OOCL	13,000TEU CONTAINER SHIP	H2005	2200KVA	6600/450V	2	2012
SHI	OOCL	13,000TEU CONTAINER SHIP	H2006	2200KVA	6600/450V	2	2012
SHI	OOCL	13,000TEU CONTAINER SHIP	H2006	2200KVA	6600/450V	2	2012
SHI	OOCL	13,000TEU CONTAINER SHIP	H2006	2200KVA	6600/450V	2	2012
SHI	OOCL	13,000TEU CONTAINER SHIP	H2007	2200KVA	6600/450V	2	2012
SHI	OOCL	13,000TEU CONTAINER SHIP	H2007	2200KVA	6600/450V	2	2012
SHI	OOCL	13,000TEU CONTAINER SHIP	H2007	2200KVA	6600/450V	2	2012
SHI	GASLOG	155K LNG CARRIER	H2016	2800KVA	6600/450V	2	2012
SHI	GASLOG	155K LNG CARRIER	H2016	1200KVA	6600/450V	2	2012
SHI	GASLOG	155K LNG CARRIER	H2017	2800KVA	6600/450V	2	2012
SHI	GASLOG	155K LNG CARRIER	H2017	1200KVA	6600/450V	2	2012
SHI	GOLAR	160K DF LNGC	H2021	2800KVA	6600/440V	2	2012
SHI	GOLAR	160K DF LNGC	H2021	1200KVA	6600/440V	2	2012
SHI	GOLAR	160K DF LNGC	H2022	2800KVA	6600/440V	2	2012
SHI	GOLAR	160K DF LNGC	H2022	1200KVA	6600/440V	2	2012

M.V EAST RESIN FR

Customer	ShipOwner	Kind of Vessel	Hull No.	Capacity	Voltage	Qty	Delivery
SHI	GOLAR	160K DF LNGC	H2023	2800KVA	6600/440V	2	2012
SHI	GOLAR	160K DF LNGC	H2023	1200KVA	6600/440V	2	2012
SHI	CHEVRON	154,000DWT SHUTTLE TANKER	H2033	2500KVA	6600/440V	2	2012
STX	ZODIAC	13,000TEU CLASS CONT. VESSEL	S1527	4200KVA	6600/450V	2	2012
STX	ZODIAC	13,000TEU CLASS CONT. VESSEL	S1527	660KVA	6600/450V	19	2012
STX	ZODIAC	13,000TEU CLASS CONT. VESSEL	S1528	4200KVA	6600/450V	2	2012
STX	ZODIAC	13,000TEU CLASS CONT. VESSEL	S1528	660KVA	6600/450V	19	2012
STX DALIAN	SCI	6,500TEU CLASS CONTAINER VESSEL	D2131	3500KVA	440/6600V	2	2012
STX DALIAN	SCI	6,500TEU CLASS CONTAINER VESSEL	D2132	3500KVA	440/6601V	2	2012
STX DALIAN	SCI	6,500TEU CLASS CONTAINER VESSEL	D2133	3500KVA	440/6602V	2	2012
SUNG DONG SHIP BUILDING	MSC	8,800TEU CLASS COMTAINER CARRIER	S4010	4000KVA	6600/450V	2	2012
SUNG DONG SHIP BUILDING	MSC	8,800TEU CLASS COMTAINER CARRIER	S4010	2800KVA	6600/450V	6	2012
SUNG DONG SHIP BUILDING	MSC	8,800TEU CLASS COMTAINER CARRIER	S4011	4000KVA	6600/450V	2	2012
SUNG DONG SHIP BUILDING	MSC	8,800TEU CLASS COMTAINER CARRIER	S4011	2800KVA	6600/450V	6	2012
SUNG DONG SHIP BUILDING	MSC	8,800TEU CLASS COMTAINER CARRIER	S4012	4000KVA	6600/450V	2	2012
SUNG DONG SHIP BUILDING	MSC	8,800TEU CLASS COMTAINER CARRIER	S4012	2800KVA	6600/450V	6	2012
SUNG DONG SHIP BUILDING	MSC	8,800TEU CLASS COMTAINER CARRIER	S4013	4000KVA	6600/450V	2	2012
SUNG DONG SHIP BUILDING	MSC	8,800TEU CLASS COMTAINER CARRIER	S4013	2800KVA	6600/450V	6	2012
SUNG DONG SHIP BUILDING	MSC	8,800TEU CLASS COMTAINER CARRIER	S4014	4000KVA	6600/450V	2	2012
SUNG DONG SHIP BUILDING	MSC	8,800TEU CLASS COMTAINER CARRIER	S4014	2800KVA	6600/450V	6	2012
DSEC	ZODIAC	8,600TEU CONTAINER SHIP	H4094	4000KVA	6600/450V	2	2013
DSEC	ZODIAC	8,600TEU CONTAINER SHIP	H4094	750KVA	6600/450V	14	2013
DSME	NOL	8,400TEU CONTAINER SHIP	H4243	4000KVA	6600/450V	2	2013
DSME	NOL	8,400TEU CONTAINER SHIP	H4243	730KVA	6600/450V	12	2013
DSME	NOL	8,400TEU CONTAINER SHIP	H4244	4000KVA	6600/450V	2	2013
DSME	NOL	8,400TEU CONTAINER SHIP	H4244	730KVA	6600/450V	12	2013
DSME	NOL	8,400TEU CONTAINER SHIP	H4245	4000KVA	6600/450V	2	2013
DSME	NOL	8,400TEU CONTAINER SHIP	H4245	730KVA	6600/450V	12	2013
DSME	NOL	8,400TEU CONTAINER SHIP	H4246	4000KVA	6600/450V	2	2013
DSME	NOL	8,400TEU CONTAINER SHIP	H4246	730KVA	6600/450V	12	2013
DSME	NOL	8,400TEU CONTAINER SHIP	H4247	4000KVA	6600/450V	2	2013
SHI	EVERGEEN	8,000TEU CONTAINER VESSEL	H1997	3600KVA	6600/450V	2	2013
SHI	EVERGEEN	8,000TEU CONTAINER VESSEL	H1997	2200KVA	6600/450V	1	2013
SHI	EVERGEEN	8,000TEU CONTAINER VESSEL	H1997	1800KVA	6600/450V	4	2013
SHI	EVERGEEN	8,000TEU CONTAINER VESSEL	H1998	3600KVA	6600/450V	2	2013
SHI	EVERGEEN	8,000TEU CONTAINER VESSEL	H1998	2200KVA	6600/450V	1	2013
SHI	EVERGEEN	8,000TEU CONTAINER VESSEL	H1998	1800KVA	6600/450V	4	2013
SHI	EVERGEEN	8,000TEU CONTAINER VESSEL	H1999	3600KVA	6600/450V	2	2013
SHI	EVERGEEN	8,000TEU CONTAINER VESSEL	H1999	2200KVA	6600/450V	1	2013

M.V CAST RESIN TR

Customer	Ship Owner	Kind of Vessel	Hull No.	Capacity	Voltage	Qty	Delivery
SHI	EVERGEEN	8,000TEU CONTAINER VESSEL	H1999	1800KVA	6600/450V	4	2013
SHI	GOLAR	160K DF LNGC	H2024	2800KVA	6600/440V	2	2013
SHI	GOLAR	160K DF LNGC	H2024	1200KVA	6600/440V	2	2013
SHI	GOLAR	160K DF LNGC	H2026	2800KVA	6600/440V	2	2013
SHI	GOLAR	160K DF LNGC	H2026	1200KVA	6600/440V	2	2013
SHI	GOLAR	160K DF LNGC	H2027	2800KVA	6600/440V	2	2013
SHI	GOLAR	160K DF LNGC	H2027	1200KVA	6600/440V	2	2013
DSME	NOL	8,400TEU CONTAINER SHIP	H4247	730KVA	6600/450V	12	2013
STX	ZODIAC	13,000TEU CLASS CONT. VESSEL	S1529	4200KVA	6600/450V	2	2013
STX	ZODIAC	13,000TEU CLASS CONT. VESSEL	S1529	660KVA	6600/450V	19	2013
STX	ZODIAC	13,000TEU CLASS CONT. VESSEL	S1530	4200KVA	6600/450V	2	2013
STX	ZODIAC	13,000TEU CLASS CONT. VESSEL	S1530	660KVA	6600/450V	19	2013
STX	ZODIAC	13,000TEU CLASS CONT. VESSEL	TBA	4200KVA	6600/450V	2	2013
STX	ZODIAC	13,000TEU CLASS CONT. VESSEL	TBA	660KVA	6600/450V	19	2013
STX	ZODIAC	13,000TEU CLASS CONT. VESSEL	TBA	4200KVA	6600/450V	2	2013
STX	ZODIAC	13,000TEU CLASS CONT. VESSEL	TBA	660KVA	6600/450V	19	2013
STX	ZODIAC	13,000TEU CLASS CONT. VESSEL	TBA	4200KVA	6600/450V	2	2013
STX	ZODIAC	13,000TEU CLASS CONT. VESSEL	TBA	660KVA	6600/450V	19	2013
STX	ZODIAC	13,000TEU CLASS CONT. VESSEL	TBA	4200KVA	6600/450V	2	2013
STX	ZODIAC	13,000TEU CLASS CONT. VESSEL	TBA	660KVA	6600/450V	19	2013
SUNG DONG SHIP BUILDING	MSC	8,800TEU CLASS COM TAINER CARRIER	S4015	4000KVA	6600/450V	2	2013
SUNG DONG SHIP BUILDING	MSC	8,800TEU CLASS COM TAINER CARRIER	S4015	2800KVA	6600/450V	6	2013
DSME	NOL	8,400TEU CONTAINER SHIP	H4248	4000KVA	6600/450V	2	2014
DSME	NOL	8,400TEU CONTAINER SHIP	H4248	730KVA	6600/450V	12	2014
DSME	NOL	8,400TEU CONTAINER SHIP	H4249	4000KVA	6600/450V	2	2014
DSME	NOL	8,400TEU CONTAINER SHIP	H4249	730KVA	6600/450V	12	2014
STX	ZODIAC	13,000TEU CLASS CONT. VESSEL	TBA	4200KVA	6600/450V	2	2014
STX	ZODIAC	13,000TEU CLASS CONT. VESSEL	TBA	660KVA	6600/450V	19	2014
STX	ZODIAC	13,000TEU CLASS CONT. VESSEL	TBA	4200KVA	6600/450V	2	2014
STX	ZODIAC	13,000TEU CLASS CONT. VESSEL	TBA	660KVA	6600/450V	19	2014

**Total : 3,216 Sets / 344 Projects
for
M.V Cast Resin TR
of
Since 2005 year**

Reference List for M.V DRY TRANSFORMERS



Customer and Quality are the KOC's first priority



Reference List for M.V DRY TR (Above 6.6kV)

Update : 2011.July

Customer	Ship Owner	Kind of Vessel	Hull No.	Capacity	Voltage	Qty	Delivery
DSEC	C.P.OFFEN	5,500TEU CONTAINER	MH4082/83/84/85/86/87	2600KVA	440/6600V	6	2010
DSEC	NSB	4,550TEU CONTAINER SHIP	MH4052/53/54/55	2060KVA	440/6600V	4	2005~2006
DSEC	NSB	4,550TEU CONTAINER SHIP	MH4062/63/64/65	2060KVA	440/6600V	4	2006~2007
DSEC	NSB(CONTI)	4,860TEU CONTAINER VESSEL	H4212/13, MH4073/75	2060KVA	440/6600V	4	2008~2009
DSME	A.P.MOLLER	45,000M2 PCTC	H4437/38/41	1750KVA	440/6600V	3	2005~2006
DSME		4,600TEU CONTAINERSHIP	H4187/88	1875KVA	440/6600V	2	2009
DSME	CONTSHIP	4,100TEU CONTAINER SHIP	H4082/83/84	4500KVA	6600/450V	6	2002
DSME	EXMAR	138,000CBM LNG REGAS VESSEL	H2237/38	1200KVA	6600/440V	4	2005
DSME	EXMAR	138,000CBM LNG REGAS VESSEL	H2237/38	3500KVA	6600/440V	4	2005
DSME	EXMAR	138,000CBM LNG REGAS VESSEL	H2237/38	620KVA	6600/440V	4	2005
DSME	EXMAR	138,000 CBM LNG CARRIER	H2208	1200KVA	6600/440V	2	2003
DSME	EXMAR	138,000 CBM LNG CARRIER	H2208	3500KVA	6600/440V	2	2003
DSME	EXMAR	138,000 CBM LNG CARRIER	H2208	500KVA	6600/440V	2	2003
DSME	EXMAR	138,000 CBM LNG CARRIER	H2218	1200KVA	6600/440V	2	2003
DSME	EXMAR	138,000 CBM LNG CARRIER	H2218	3500KVA	6600/440V	2	2003
DSME	EXMAR	138,000 CBM LNG CARRIER	H2218	500KVA	6600/440V	2	2003
DSME	EXMAR	150,900 CBM LNG REGAS VESSEL	H2254/63/70/71/72	620KVA	6600/445V	10	2007~2008
DSME	EXMAR	150,900 CBM LNG REGAS VESSEL	H2254/63/70/71/72	3500KVA	6600/445V	10	2007~2008
DSME	EXMAR	150,900 CBM LNG REGAS VESSEL	H2254/63/70/71/72	1200KVA	6600/445V	10	2007~2008
DSME	HAMBURG SUD	4,600TEU CONTAINERSHIP	H4189/90	1875KVA	440/6600V	2	2010
DSME	HAMBURG-SUD	3,200TEU CONTAINER SHIP	H4129/30/31/32/33/34	1625KVA	440/6600V	6	2006~2007
DSME		6,000 UNIT PCTC	H4455/56	2250KVA	440/6600V	2	2009
DSME	MOL	138,000 CBM LNG CARRIER	H2210/11	3000KVA	6600/440V	4	2002~2003
DSME	MOL	138,000 CBM LNG CARRIER	H2210/11	700KVA	6600/440V	4	2002~2003
DSME	NSB	4,550 TEU CONTAINER SHIP	H4113/14	2060KVA	440/6600V	2	2005
DSME	NWS	135,000 CBM LNG CARRIER	H2214	700KVA	6600/440V	2	2003
DSME	NWS	135,000 CBM LNG CARRIER	H2214	2500KVA	6600/440V	2	2003
DSME	SEACASTLE	4,400 TEU CONTAINERSHIP	H4166/67/68/69	1875KVA	440/6600V	4	2009~2010
DSME	SHELL	140,500 CBM LNG CARRIER	H2216	2500KVA	6600/440V	2	2002
DSME	SHELL	140,500 CBM LNG CARRIER	H2216	700KVA	6600/440V	2	2002
DSME	SOVCOMFLOT	162,000 DWT ICE SHIP	H5272/73/74/75	1875KVA	440/6600V	4	2005~2007
DSME		4,400 TEU CONTAINERSHIP	H4144/45/46/47	1875KVA	440/6600V	4	2009
DSME		4,400 TEU CONTAINERSHIP	H4170/71/72/73	1875KVA	440/6600V	4	2009~2010
DSME	TMT	317,000 DWT CRUDE OIL TANKER	H5327/28/29/30/31	1250KVA	440/6600V	10	2009~2010
HHI		HSHI	S371/2	2100KVA	440/6600V	2	2008
HHI		HYA YANG ELEC TR FOR INVERTER		500KVA	6600/400V	1	2003

M.V EAST RESIN TR

M.V DRY TR

Customer	ShipOwner	Kind of Vessel	Hull No.	Capacity	Voltage	Qty	Delivery
HHI		HYA YANG ELECT R FOR INVERTER		750KVA	6600/400V	1	2003
HHI		IBN ZAHR PP-3	IBN ZAHR PP-3	1250KVA	13,800/400V	1	2007
HHI		SAKHALIN	SAKHALIN	1600KVA	10,000/420V	2	2006
HHI		SHI/H.N1293	H1293	2400KVA	6600/450V	2	1999
HHI	ZODIAC	6,500TEU CONTAINER SHIP	H1287/88/89/90	1900KVA	6600/440V	24	2000~2001
HHI	ZODIAC	6,500TEU CONTAINER SHIP	H1287/88/89/90	3900KVA	6600/440V	8	2000~2001
HHI			HMD0020	1375KVA	440/6600V	1	2001
HHI			HMD0034/35/36/37	1500KVA	440/6600V	4	2002
HHI			HMD0114/5/6/7	1500KVA	440/6600V	4	2002~2003
IHI	NYK	6,200TEU CONTAINER SHIP	S3155/56	1900KVA	6600/450V	4	2002~2003
IHI	NYK	6,200TEU CONTAINER SHIP	S3155/56	2100KVA	6600/450V	4	2002~2003
IHI	NYK	6,200TEU CONTAINER SHIP	S3155/56	3400KVA	6600/450V	4	2002~2003
SHI	B.G.	145K CBM LNG CARRIER		1000KVA	6600/450V	14	2005~2007
SHI	B.G.	145K CBM LNG CARRIER		2400KVA	6600/450V	14	2005~2007
SHI	BP AMOCO	138,000TON LNGC	H1380/81	1000KVA	6600/440V	4	2001~2002
SHI	BP AMOCO	138,000TON LNGC	H1380/81	1800KVA	6600/440V	4	2001~2002
SHI	BP SHIPPING	138KTON BP AMOCO LNGC	H1416	1000KVA	6600/440V	2	2002
SHI	BP SHIPPING	138KTON BP AMOCO LNGC	H1416	1800KVA	6600/440V	2	2002
SHI		138K LNG CARRIER	H1428	1000KVA	6600/450V	2	2003
SHI		138K LNG CARRIER	H1428	2200KVA	6600/450V	2	2003
SHI	EXMAR	138KTON LNG CARRIER	H1406	1000KVA	6600/450V	2	2002
SHI	EXMAR	138KTON LNG CARRIER	H1406	2200KVA	6600/450V	2	2002
SHI	EXXON MOBIL	145,000 LNG CARRIER	H1594	1000KVA	6600/450V	2	2005
SHI	EXXON MOBIL	145,000 LNG CARRIER	H1594	2400KVA	6600/450V	2	2005
SHI	HANJIN	4,300TEU CONTAINER		4000KVA	440/6600V	8	2007~2008
SHI		10,000 TEU CONTAINER VESSEL	H1732/33/34/35/36	1800KVA	6600/450V	15	2009
SHI		10,000 TEU CONTAINER VESSEL	H1732/33/34/35/36	2100KVA	6600/450V	5	2009
SHI		10,000 TEU CONTAINER VESSEL	H1732/33/34/35/36	4200KVA	6600/450V	10	2009
SHI	KNUTSEN	148K DWT SHUTTLE	H1445/46	2400KVA	6600/440V	4	2004
SHI		105K DWT CRUDE OIL TK	H1451/52/53/54/75	2100KVA	440/6600V	5	2003~2004
SHI	MISC	145,000 LNG CARRIER	H1589/90/91	1000KVA	6600/440V	6	2005~2006
SHI	MISC	145,000 LNG CARRIER	H1589/90/91	2400KVA	6600/440V	6	2005~2006
SHI	MISC	145K LNG CARRIER	H1502/03	1500KVA	6600/440V	4	2004~2005
SHI	MISC	145K LNG CARRIER	H1502/03	2200KVA	6600/440V	4	2004~2005
SHI	MODEC	750,000 BBSL FPSO	H1579	2000KVA	11,000/450V	1	2006
SHI	MSC	5,800TEU CONTAINER	H1651/52/53/54	3300KVA	440/6600V	4	2007~2008
SHI	NEXUS	FPSO	H1716	3300KVA	11,000/690V	2	2008
SHI	NEXUS	FPSO	H1767	3300KVA	11,000/690V	2	2009
SHI	NYK	6,200TEU CONTAINER	H1367/68/69/70/71	1250KVA	6600/445V	15	2001~2002

M.V DRY TR

Customer	ShipOwner	Kind of Vessel	Hull No.	Capacity	Voltage	Qty	Delivery
SHI	NYK	6,200TEU CONTAINER	H1367/68/69/70/71	1400KVA	6600/445V	15	2001~2002
SHI	NYK	6,200TEU CONTAINER	H1367/68/69/70/71	3200KVA	6600/450V	10	2001~2002
SHI	OMAN	147,000m ³ LNG CARRIER	H1573	1200KVA	6600/450V	2	2005
SHI	OMAN	147,000m ³ LNG CARRIER	H1573	2400KVA	6600/450V	2	2005
SHI	OOCL	7,700 TEU CONTAINER		1150KVA	6600/450V	48	2002~2004
SHI	OOCL	7,700 TEU CONTAINER		4200KVA	6600/450V	16	2002~2004
SHI	OOCL	7200 TEU CONTAINER	H1537/38/69/70	1150KVA	6600/450V	24	2005~2007
SHI	OOCL	7200 TEU CONTAINER	H1537/38/69/70	4200KVA	6600/450V	8	2005~2007
SHI	OOCL	8,063 TEU CONTAINER VESSEL	H1719/20/21/22	1150KVA	6600/450V	24	2009
SHI	OOCL	8,063 TEU CONTAINER VESSEL	H1719/20/21/22	4200KVA	6600/450V	8	2009
SHI	P&O NEDLLOYD	4,000 TEU CONTAINER		4500KVA	6600/450V	14	2001~2002
SHI	RASGAS	145,000 LNG CARRIER	H1440/41/42	1000KVA	6600/450V	6	2004
SHI	RASGAS	145,000 LNG CARRIER	H1440/41/42	2200KVA	6600/450V	6	2004
SHI	SEASPAN	8,100 TEU CONTAINER	H1488/89/90/91/92	1700KVA	6600/450V	20	2004
SHI	SYNERGY	4,250 TEU CONTAINER VESSEL	H1771/72/73/74	4000KVA	450/6600V	4	2008~2009
SHI	UNS	147,500 DWT SHUTTLE TK	H1408/09	2000KVA	6600/690V	4	2003
SHI	UNS	23K SHUTTLE TK	H1376/77	1500KVA	6600/445V	4	2002
SHI		100,000DWT SHUTTLE TANK	H1313	2800KVA	690/6600V	2	2000
SHI		105K DWT CRUDE OIL TK	H1287	1400KVA	440/6600V	1	1999
SHI		147,000m ³ LNG CARRIER	H1536	1200KVA	6600/450V	2	2005
SHI		147,000m ³ LNG CARRIER	H1536	2400KVA	6600/450V	2	2005
SHI		155K ILTC DF-EP LNGC	H1686	1000KVA	6600/450V	2	2008
SHI		155K ILTC DF-EP LNGC	H1686	2400KVA	6600/450V	2	2008
SHI		170KTWIN-DF LNGC	H1745/46, H1858/59	2400KVA	6600/450V	8	2008~2009
SHI		170KTWIN-DF LNGC	H1745/46, H1858/59	1000KVA	6600/450V	8	2008~2009
SHI			H1260/61/62	2700KVA	440/6600V	3	1998~1999
STX SHIPBUILDING		173K CBM LNG CARRIER	S3008	2400KVA	6600/450V	2	2009
STX SHIPBUILDING		173K CBM LNG CARRIER	S3008	900KVA	6600/450V	2	2009

**Total : 591 Sets / 191 Projects
for
M.V Dry TR**



Customer and Quality are the KOC's first priority





KOC ELECTRIC CO., LTD.

www.kocelec.com

✦ HEAD OFFICE

#1495-4, SONGJUNG-DONG, GANGSEO-KU,
BUSAN 618-270, KOREA

- TEL. 82-51-832-0550
- FAX. 82-51-832-0660
- E-MAIL. koc@kocelec.com

✦ ULSAN FACTORY

#852-162, GACHEON-RI, SAMNAM-MYEON,
ULJU-GUN, ULSAN, KOREA

- TEL. 82-52-255-7700
- FAX. 82-52-255-7799
- E-MAIL. pkoc@kocelec.com